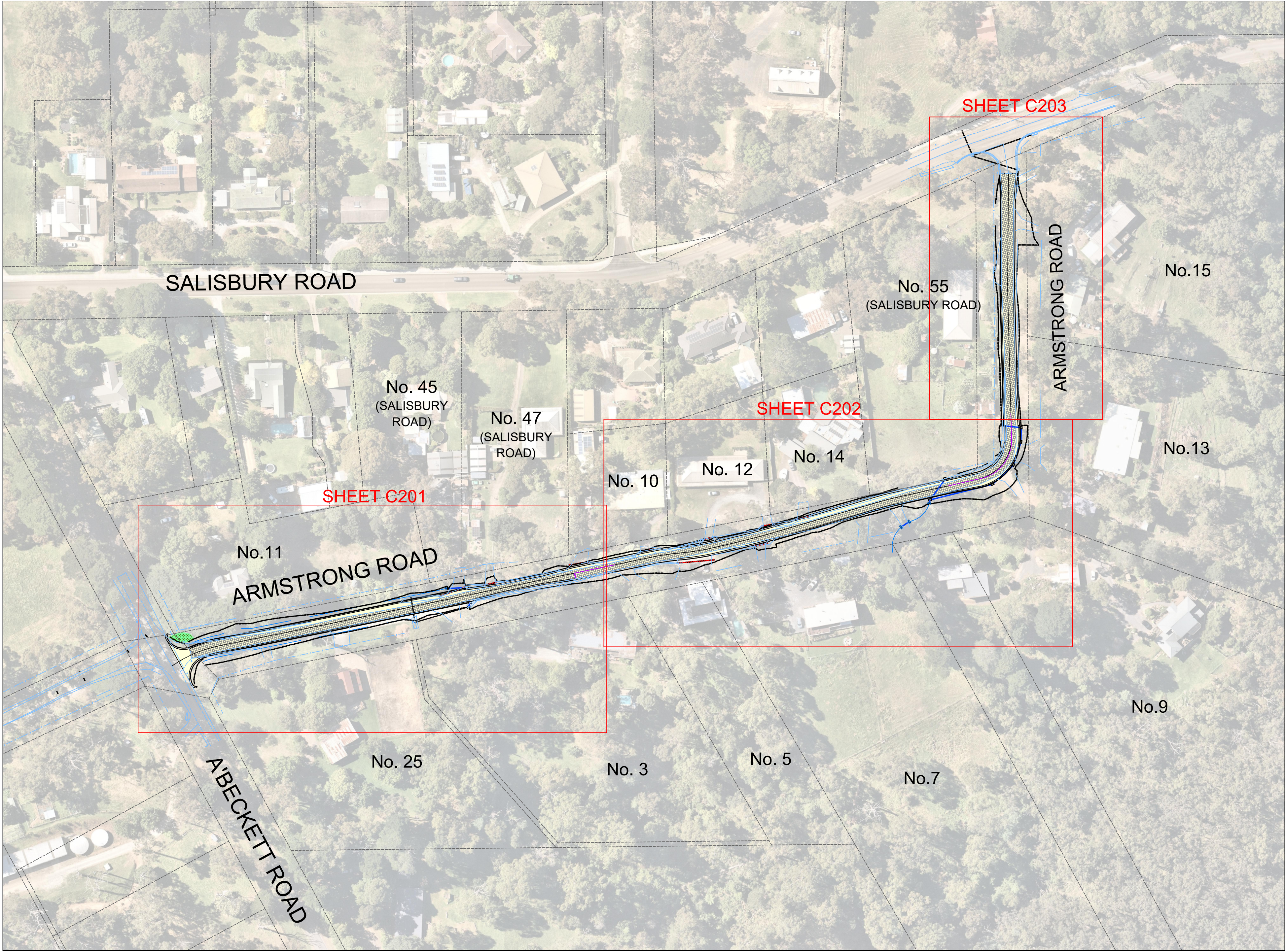
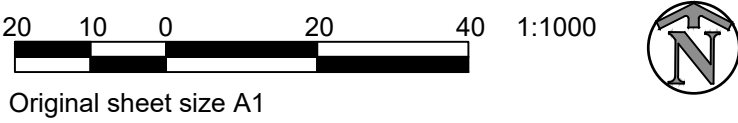


ROAD AND DRAINAGE CONSTRUCTION WORKS

ARMSTRONG ROAD, UPPER BEACONSFIELD



OVERALL PLAN



| DRAWING INDEX | | | |
|---------------|---------------------------------------------------------|--------------|-------------|
| SHEET NO. | TITLE | CAD FILE | VERSION NO. |
| C101 | LOCALITY PLAN, KEY MAP, PAVEMENT DETAILS, DRAWING INDEX | 26331-C1.dwg | 02 |
| C201 | DETAIL PLAN - 1 OF 3 | 26331-C2.dwg | 02 |
| C202 | DETAIL PLAN - 2 OF 3 | 26331-C2.dwg | 02 |
| C203 | DETAIL PLAN - 3 OF 3 | 26331-C2.dwg | 02 |
| C204 | TYPICAL ROAD CROSS-SECTIONS, DETAILS | 26331-C2.dwg | 02 |

COUNCIL REF: RFQ 19-44-P6

WARNING
BEWARE - UNDERGROUND SERVICES
THE LOCATIONS OF EXISTING UNDERGROUND SERVICES ARE APPROXIMATE ONLY AND THEIR EXACT DEPTH AND LOCATION SHOULD BE VERIFIED AND PROVEN ON SITE BY THE APPROPRIATE SERVICE PROVIDERS PRIOR TO ANY SITE EXCAVATION. NO GUARANTEE IS GIVEN THAT ALL EXISTING SERVICES ARE SHOWN. CONTRACTOR TO TAKE PRECAUTIONS TO AVOID CONFLICTS



| | | | |
|------|----------|------------------------------------|--|
| | | | |
| | | | |
| | | | |
| | | | |
| 02 | 16-04-21 | COMMUNITY CONSULTATION PLAN ISSUED | |
| 01 | 25-08-20 | ISSUED TO COUNCIL FOR APPROVAL | |
| 00 | 13-08-20 | ORIGINAL ISSUE | |
| VER. | DATE | AMENDMENT | |

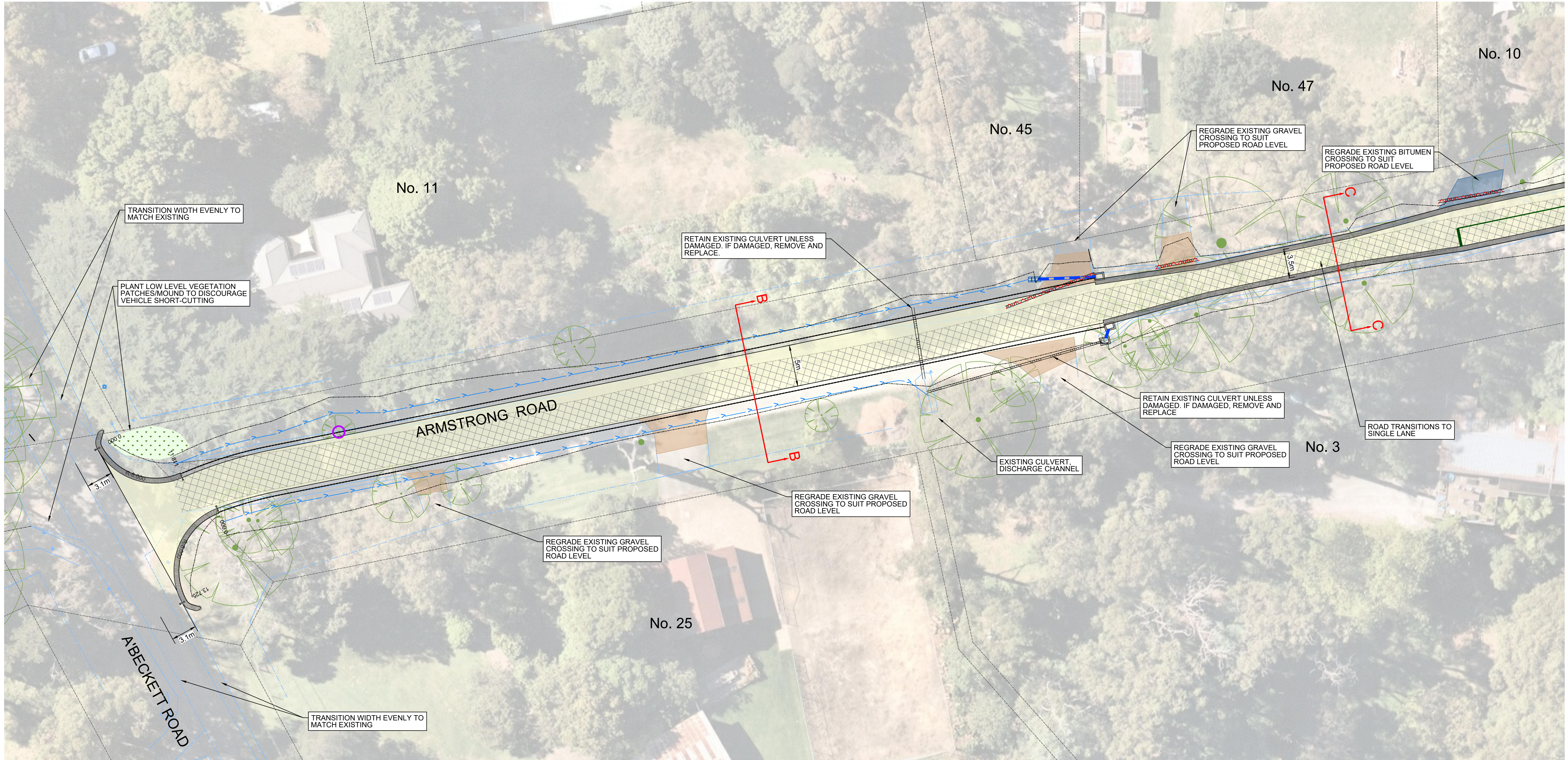
| | |
|-----------|------------------|
| CAD FILE: | 26331-C1.dwg |
| DESIGNED: | R. HALFORD (JCA) |
| CHECKED: | M. DUGAN (JCA) |
| DATE: | 25-08-20 |
| DATUM: | AHD |

SCALE: AS SHOWN



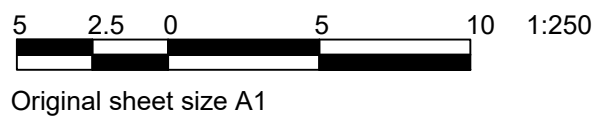
| | |
|------------------------------------|------------------------|
| PLAN STATUS: | COMMUNITY CONSULTATION |
| ROAD RECONSTRUCTION | |
| ARMSTRONG ROAD, UPPER BEACONSFIELD | |
| CARDINIA SHIRE COUNCIL | |
| OVERALL PLAN AND DRAWING INDEX | |

| | |
|------------|-------|
| SHEET SIZE | A1 |
| VERSION | 02 |
| DWG No. | 26331 |
| SHEET No. | C101 |



CONTINUED ON SHEET 202

DETAIL PLAN



LEGEND

- CRUSHED ROCK VEHICLE CROSSING
- ASPHALT VEHICLE CROSSING
- ASPHALT ROAD PAVEMENT
- EXISTING CRUSHED ROCK PAVEMENT TO BE OVERLAYED
- PROPOSED KERB
- PROPOSED LINEMARKING
- EXISTING DRAINAGE PIPE
- REMOVE EXISTING DRAINAGE PIPE
- PROPOSED DRAINAGE PIPE
- PROPOSED TABLE DRAIN INVERT
- TREE TO BE REMOVED
- EXISTING TREE / VEGETATION POTENTIALLY IMPACTED - SUBJECT TO FURTHER ASSESSMENT

COUNCIL REF: RFQ 19-44-P6

WARNING
BEWARE - UNDERGROUND SERVICES

THE LOCATIONS OF EXISTING UNDERGROUND SERVICES ARE APPROXIMATE ONLY AND THEIR EXACT DEPTH AND LOCATION SHOULD BE VERIFIED AND PROVEN ON SITE BY THE APPROPRIATE SERVICE PROVIDERS PRIOR TO ANY SITE EXCAVATION. NO GUARANTEE IS GIVEN THAT ALL EXISTING SERVICES ARE SHOWN. CONTRACTOR TO TAKE PRECAUTIONS TO AVOID CONFLICTS



| | | | | | |
|------|----------|-------------------------------------|--|--|--|
| | | | | | |
| | | | | | |
| | | | | | |
| | | | | | |
| 02 | 16-04-21 | COMMUNITY CONSULTATION PLANS ISSUED | | | |
| 01 | 25-08-20 | ISSUED FOR COUNCIL APPROVAL | | | |
| 00 | 13-08-20 | ORIGINAL ISSUE | | | |
| VER. | DATE | AMENDMENT | | | |

| | |
|-----------|------------------|
| CAD FILE: | 26331 - C2.dwg |
| DESIGNED: | R. HALFORD (JCA) |
| CHECKED: | M. DUGAN (JCA) |
| DATE: | 25-08-20 |
| DATUM: | AHD |

SCALE: AS SHOWN

JCA Land Consultants
Surveying - Engineering - Town Planning
Suite 9, 303 Maroondah Highway
Ringwood Victoria, Australia 3134
Phone 03 9735 4888 Email jca@jcalc.com.au www.jcalc.com.au

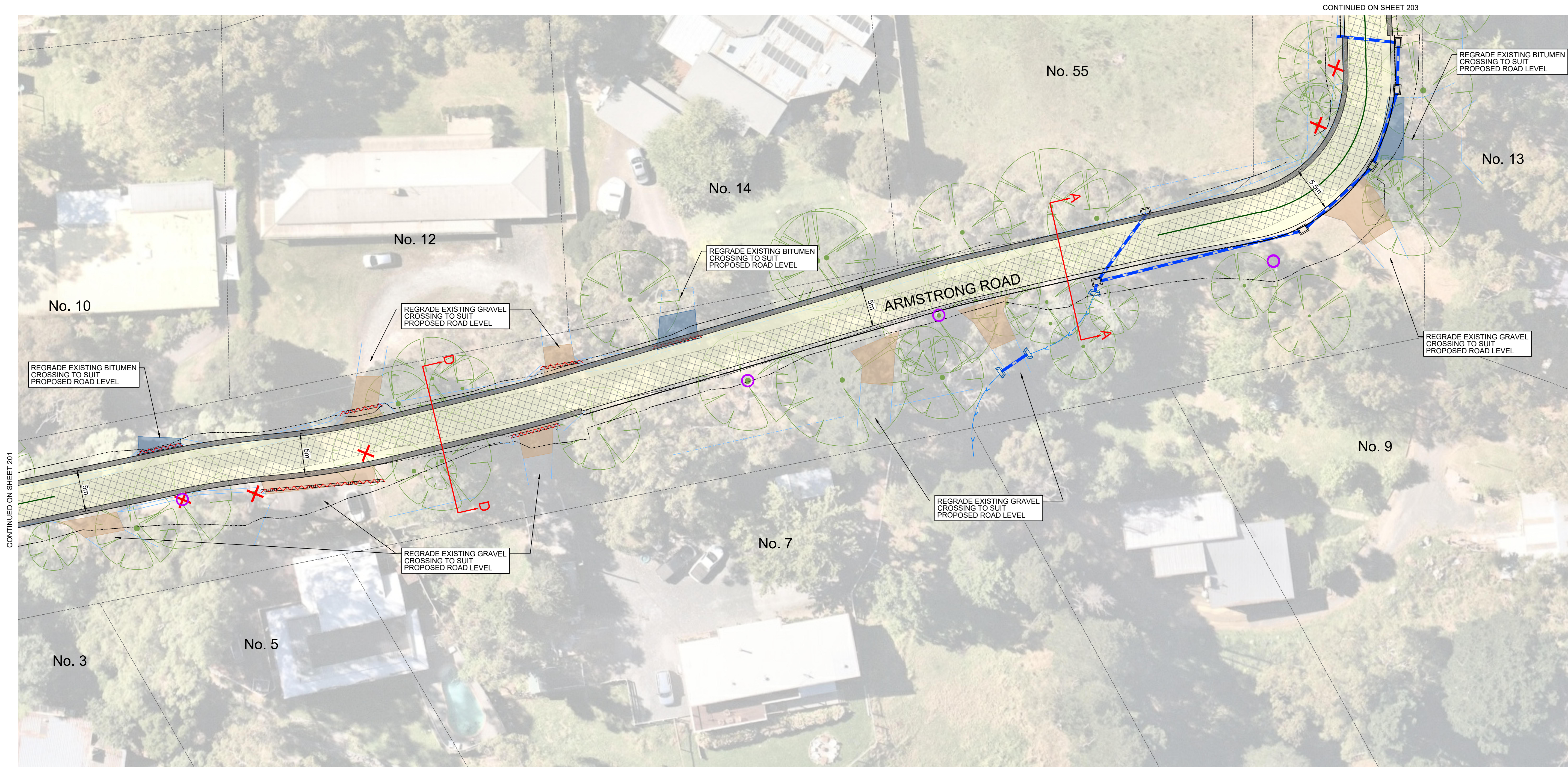
Quality Management System
ISO 9001
trust-mark.com.au

PLAN STATUS: **COMMUNITY CONSULTATION**

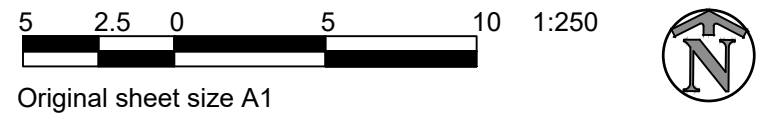
ROAD RECONSTRUCTION
ARMSTRONG ROAD, UPPER BEACONSFIELD
CARDINIA SHIRE COUNCIL

DETAIL PLAN - 1 OF 3

| | |
|------------|-------|
| SHEET SIZE | A1 |
| VERSION | 02 |
| DWG No. | 26331 |
| SHEET No. | C201 |



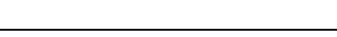


DETAIL PLAN

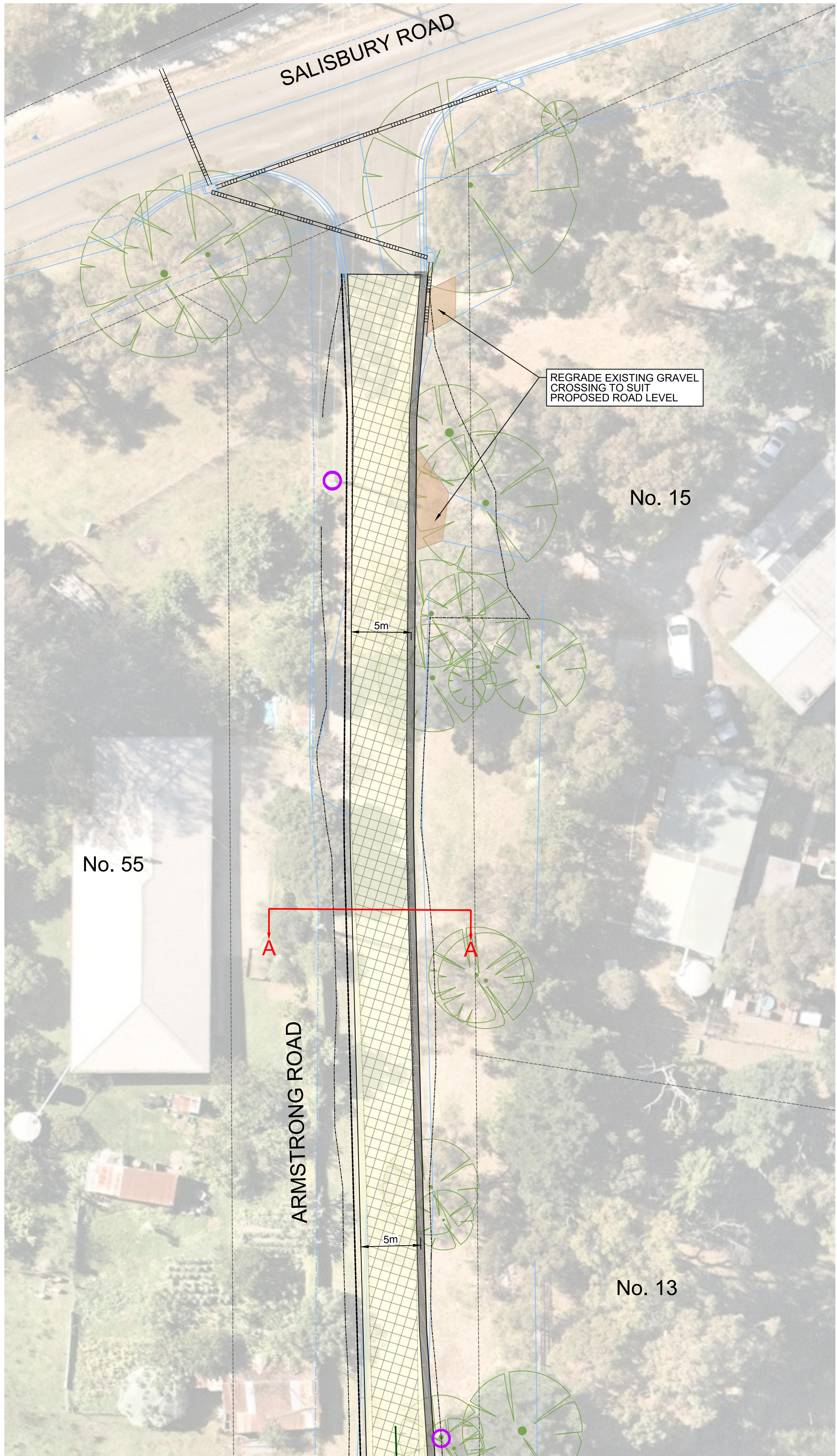


LEGEND

- CRUSHED ROCK VEHICLE CROSSING
- ASPHALT VEHICLE CROSSING
- ASPHALT ROAD PAVEMENT
- EXISTING CRUSHED ROCK PAVEMENT TO BE OVERLAYED
- PROPOSED KERB
- PROPOSED LINEMARKING
- EXISTING DRAINAGE PIPE
- REMOVE EXISTING DRAINAGE PIPE
- PROPOSED DRAINAGE PIPE
- PROPOSED TABLE DRAIN INVERT
- TREE TO BE REMOVED
- EXISTING TREE / VEGETATION POTENTIALLY IMPACTED - SUBJECT TO FURTHER ASSESSMENT

COUNCIL REF: RFQ 19-44-P6

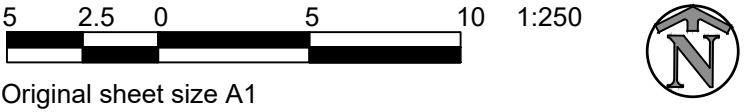
| | | | | | | | | | | | | | | | | | |
|-------------------------------------------------------------------------------------------------------------------------------------------------------------------------------------------------------------------------------------------------------------------------------------------------------------------------------------------------------------------------------------------------------------------------------------------------------------------------------------------------------------------------------------------------------------------------------------------------------|--|--|--|--|--|-------------------------------------------------------------------------------------------------------------------------------------------------------------------------------|--|--|---------------------------------------------------------------------------------------------------------------------------------------------------------------------------------------------------------------------------------------------------------------------------------------------------------------------------------------------------------------------------------------------------------------------------------------------------------------------------------------------------------------------------|--|--|---------------------------------------------------------------------------------------------------------------------------------------------------------------------------------|--|--|-------------------------------------------------------------------------------------------------------------------|--|--|
| <div><div><div>WARNING</div><div>BEWARE - UNDERGROUND SERVICES</div><div>THE LOCATIONS OF EXISTING UNDERGROUND SERVICES ARE APPROXIMATE ONLY AND THEIR EXACT DEPTH AND LOCATION SHOULD BE VERIFIED AND PROVEN ON SITE BY THE APPROPRIATE SERVICE PROVIDERS PRIOR TO ANY SITE EXCAVATION. NO GUARANTEE IS GIVEN THAT ALL EXISTING SERVICES ARE SHOWN. CONTRACTOR TO TAKE PRECAUTIONS TO AVOID CONFLICTS</div></div><div><div>DIAL BEFORE YOU DIG www.1100.com.au The Essential First Step</div></div></div> | | | | | | <div>CAD FILE: 26331 - C2.dwg</div> <div>DESIGNED: R. HALFORD(JCA)</div> <div>CHECKED: M. DUGAN(JCA)</div> <div>DATE: 25-08-20</div> <div>DATUM AHD</div> | | | <div>SCALE: AS SHOWN</div> <div><div>JCA Land Consultants</div><div>Surveying - Engineering - Town Planning Suite 9, 303 Maroondah Highway Ringwood Victoria, Australia 3134 Phone 03 9735 4888 Email jca@jcalc.com.au www.jcalc.com.au</div><div><div>Quality Management System ISO 9001 trust-mark.com®</div></div></div> | | | <div>PLAN STATUS: COMMUNITY CONSULTATION</div> <div>ROAD RECONSTRUCTION ARMSTRONG ROAD, UPPER BEACONSFIELD CARDINIA SHIRE COUNCIL</div> <div>DETAIL PLAN - 2 OF 3</div> | | | <div>SHEET SIZE A1</div> <div>VERSION 02</div> <div>DWG No. 26331</div> <div>SHEET No. C202</div> | | |
| <div>02 16-04-21 COMMUNITY CONSULTATION PLANS ISSUED</div> <div>01 25-08-20 ISSUED FOR COUNCIL APPROVAL</div> <div>00 13-08-20 ORIGINAL ISSUE</div> <div>VER. DATE AMENDMENT</div> | | | | | | | | | | | | | | | | | |



LEGEND

- CRUSHED ROCK VEHICLE CROSSING
- ASPHALT VEHICLE CROSSING
- ASPHALT ROAD PAVEMENT
- EXISTING CRUSHED ROCK PAVEMENT TO BE OVERLAYED
- PROPOSED KERB
- PROPOSED LINEMARKING
- EXISTING DRAINAGE PIPE
- REMOVE EXISTING DRAINAGE PIPE
- PROPOSED DRAINAGE PIPE
- PROPOSED TABLE DRAIN INVERT
- TREE TO BE REMOVED
- EXISTING TREE / VEGETATION POTENTIALLY IMPACTED - SUBJECT TO FURTHER ASSESSMENT

DETAIL PLAN



COUNCIL REF: RFQ 19-44-P6

WARNING
BEWARE - UNDERGROUND SERVICES
THE LOCATIONS OF EXISTING UNDERGROUND SERVICES ARE APPROXIMATE ONLY AND THEIR EXACT DEPTH AND LOCATION SHOULD BE VERIFIED AND PROVEN ON SITE BY THE APPROPRIATE SERVICE PROVIDERS PRIOR TO ANY SITE EXCAVATION. NO GUARANTEE IS GIVEN THAT ALL EXISTING SERVICES ARE SHOWN. CONTRACTOR TO TAKE PRECAUTIONS TO AVOID CONFLICTS



| | | | |
|------|----------|-------------------------------------|--|
| | | | |
| | | | |
| | | | |
| | | | |
| 02 | 16-04-21 | COMMUNITY CONSULTATION PLANS ISSUED | |
| 01 | 25-08-20 | ISSUED FOR COUNCIL APPROVAL | |
| 00 | 13-08-20 | ORIGINAL ISSUE | |
| VER. | DATE | AMENDMENT | |

| | |
|-----------|-----------------|
| CAD FILE: | 26331 - C2.dwg |
| DESIGNED: | R. HALFORD(JCA) |
| CHECKED: | M. DUGAN(JCA) |
| DATE: | 25-08-20 |
| DATUM | AHD |

SCALE: AS SHOWN

JCA Land Consultants
Surveying - Engineering - Town Planning
Suite 9, 303 Maroondah Highway
Ringwood Victoria, Australia 3134
Phone 03 9735 4888 Email jca@jcalc.com.au www.jcalc.com.au

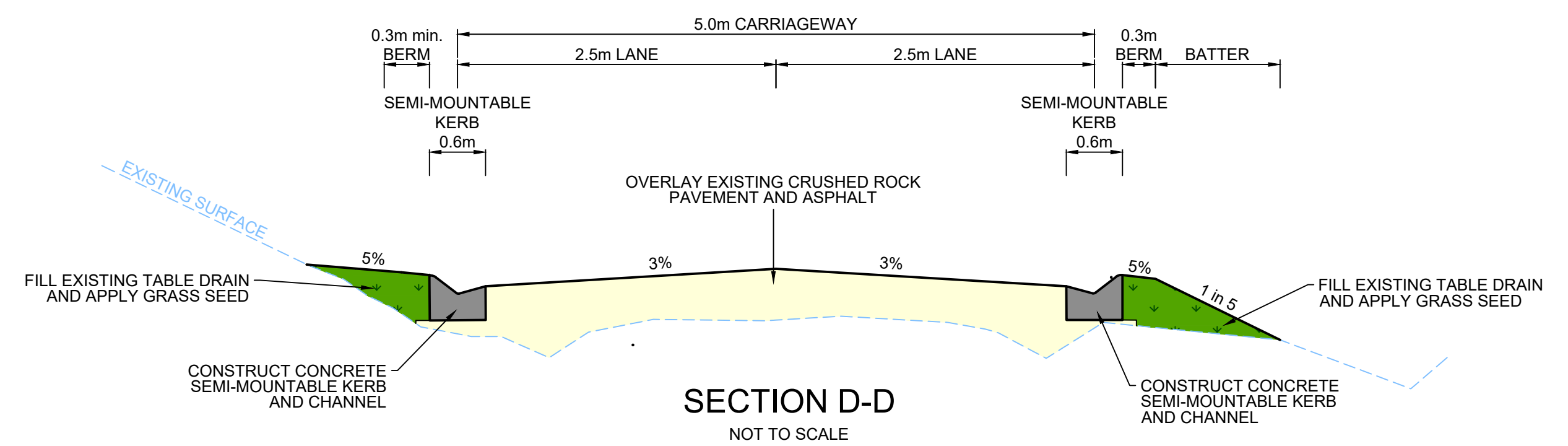
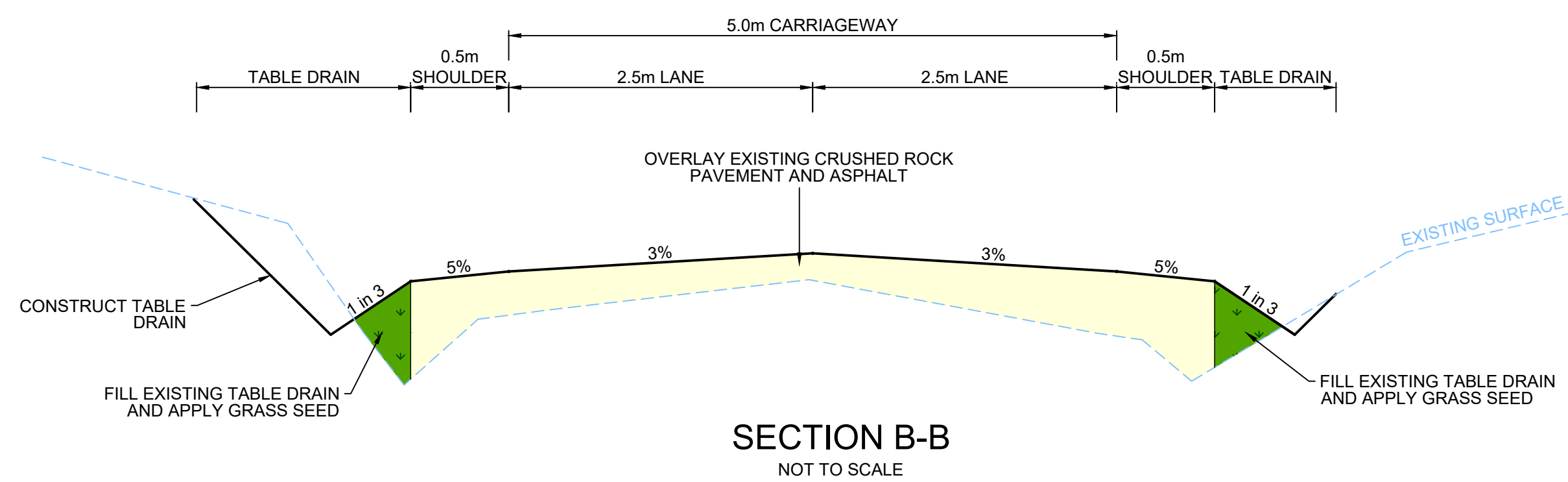
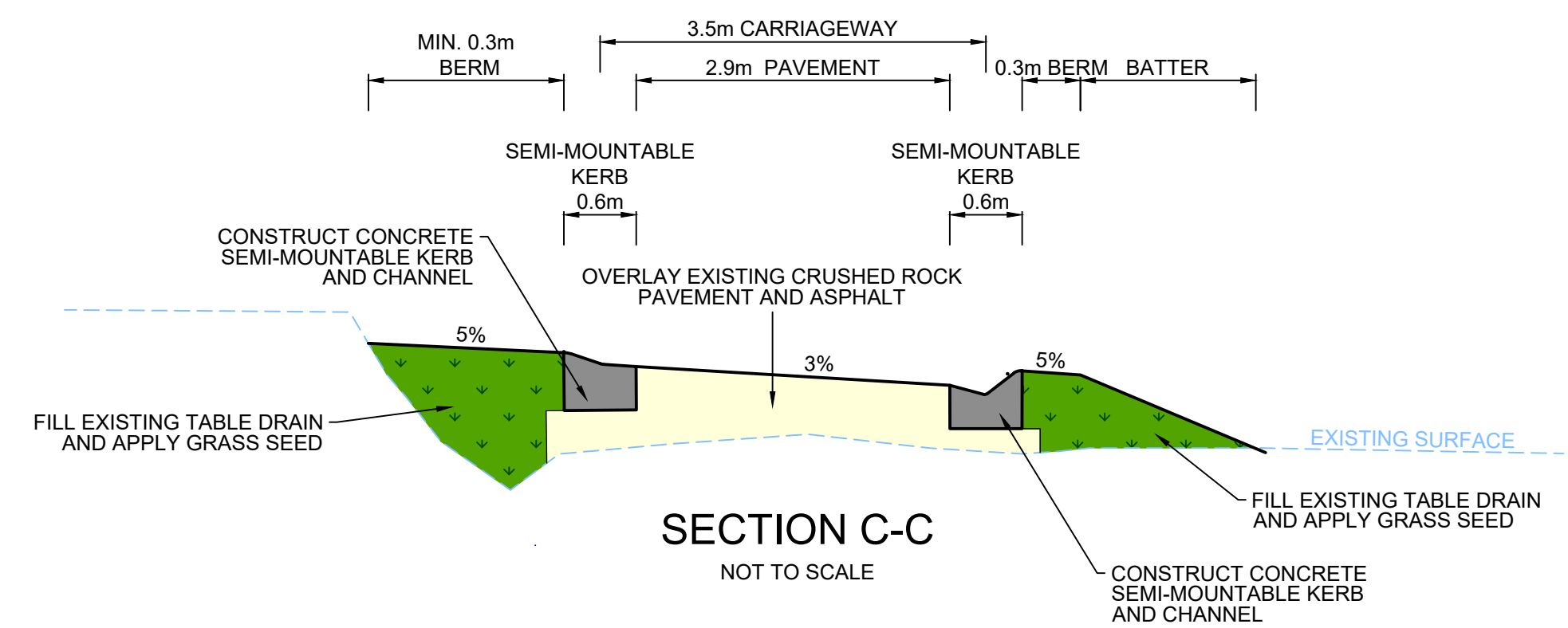
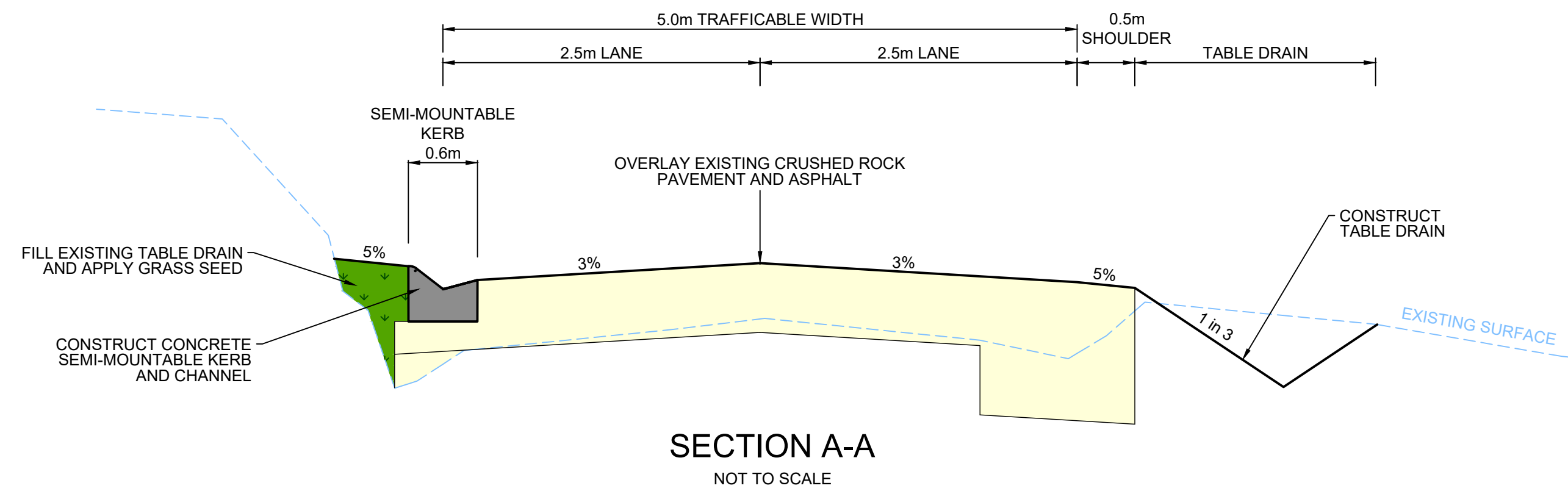
Quality Management System
ISO 9001
trust-mark.com®

PLAN STATUS: **COMMUNITY CONSULTATION**

ROAD RECONSTRUCTION
ARMSTRONG ROAD, UPPER BEACONSFIELD
CARDINIA SHIRE COUNCIL

DETAIL PLAN - 3 OF 3

| | |
|------------|-------|
| SHEET SIZE | A1 |
| VERSION | 02 |
| DWG No. | 26331 |
| SHEET No. | C203 |



COUNCIL REF: RFQ 19-44-P6

WARNING
BEWARE - UNDERGROUND SERVICES
THE LOCATIONS OF EXISTING UNDERGROUND SERVICES ARE APPROXIMATE ONLY AND THEIR EXACT DEPTH AND LOCATION SHOULD BE VERIFIED AND PROVEN ON SITE BY THE APPROPRIATE SERVICE PROVIDERS PRIOR TO ANY SITE EXCAVATION. NO GUARANTEE IS GIVEN THAT ALL EXISTING SERVICES ARE SHOWN. CONTRACTOR TO TAKE PRECAUTIONS TO AVOID CONFLICTS



| | | | |
|------|----------|-------------------------------------|--|
| | | | |
| | | | |
| | | | |
| | | | |
| 02 | 16-04-21 | COMMUNITY CONSULTATION PLANS ISSUED | |
| 01 | 25-08-20 | ISSUED FOR COUNCIL APPROVAL | |
| 00 | 13-08-20 | ORIGINAL ISSUE | |
| VER. | DATE | AMENDMENT | |

| | |
|-----------|-----------------|
| CAD FILE: | 26331 - C2.dwg |
| DESIGNED: | R. HALFORD(JCA) |
| CHECKED: | M. DUGAN(JCA) |
| DATE: | 25-08-20 |
| DATUM | AHD |

SCALE: AS SHOWN

JCA Land Consultants
Surveying - Engineering - Town Planning
Suite 9, 303 Maroondah Highway
Ringwood Victoria, Australia 3134
Phone 03 9735 4888 Email jca@jcalc.com.au www.jcalc.com.au

Quality Management System
ISO 9001
trust-mark.com®

PLAN STATUS: **COMMUNITY CONSULTATION**

ROAD RECONSTRUCTION
ARMSTRONG ROAD, UPPER BEACONSFIELD
CARDINIA SHIRE COUNCIL
TYPICAL ROAD CROSS-SECTIONS

| | |
|------------|-------|
| SHEET SIZE | A1 |
| VERSION | 02 |
| DWG No. | 26331 |
| SHEET No. | C204 |