

Your community, your say

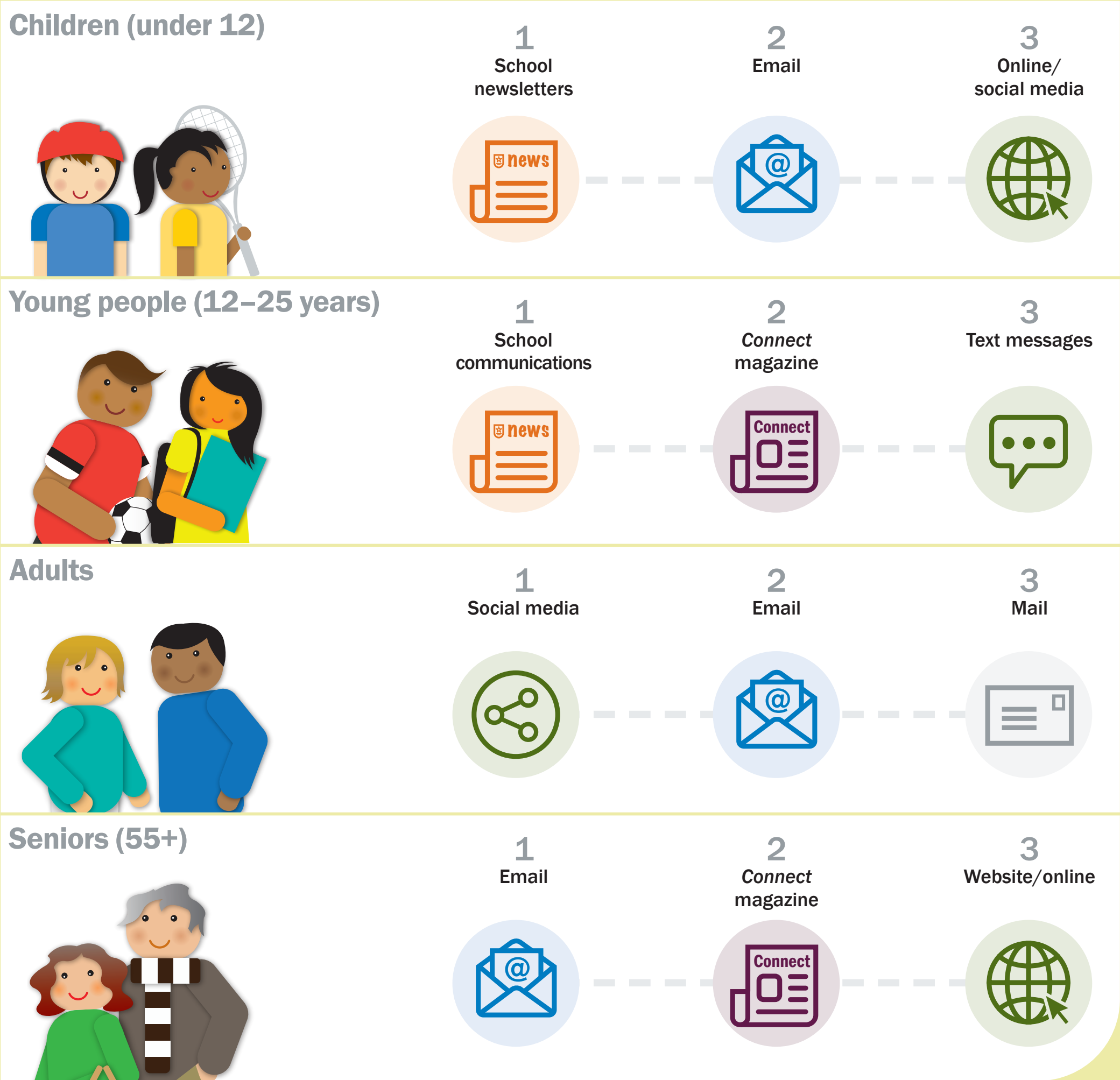
Developing our *Community Engagement Policy*

We heard from 175 community members over August and September 2020. Your feedback helped us develop Council’s *Community Engagement Policy* and engagement processes.

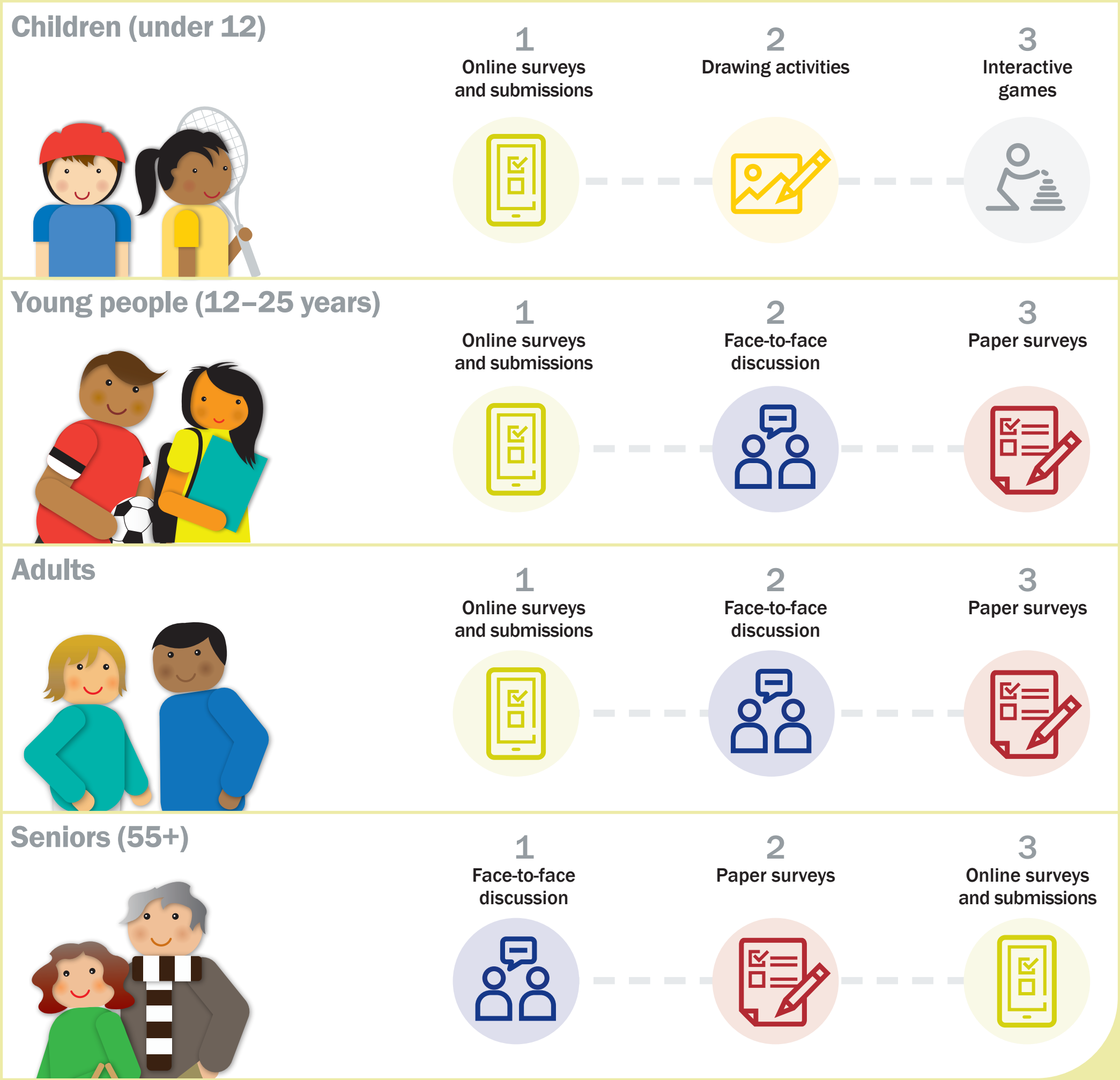
You told us your preferred ways to hear about opportunities to have input into Council’s decisions and how you would like to contribute. Your top responses are represented in the infographic below.

Council’s draft *Community Engagement Policy* highlights the importance of using a variety of communication and engagement methods to effectively reach community members who would be affected by or have an interest in the decision being made.

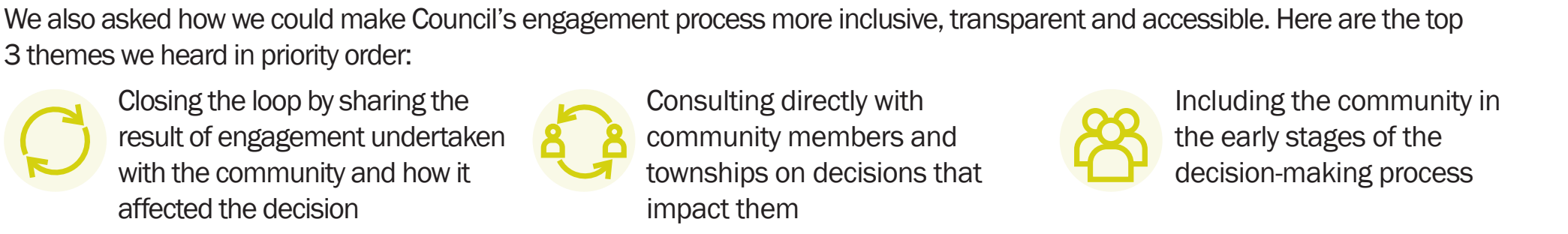
Top 3 ways for us to communicate with you



Top 3 ways you want to provide input and feedback to us



Your top 3 themes for Council’s engagement process



Council’s draft *Community Engagement Policy* incorporates the above feedback by providing guidance on who to consult, when to consult, and the need to inform the community of consultation results and final outcomes.