



WORRELL RESERVE SKATEPARK COMMUNITY CONSULTATION FINAL REPORT



12 APRIL 2023

Stage 2 Overview

Stage 2 Consultation

Based on the information gathered during the first round of community consultation, the Worrell Reserve Youth Plaza and Skatepark concept design was developed and then presented to the community to show the outcome and seek their feedback.

The feedback gathered informed any decisions and changes when preparing the final concept design.

Methodology

- Online / Social Media / Email feedback
- Community pop up at **The Hub**
- School presentation & questions:
Emerald Primary School
Emerald Secondary College

Survey Response Data Summary

There was an overwhelming positive response to the concept design which was greatly appreciated!

Some minor changes to the street course area were requested and were easily accommodated in the final concept design.

The bowl had many detailed responses in terms of shape, depth, radius, etc. The final shape is similar to the original, but it was completely redesigned to accommodate the feedback and deliver a better bowl for the community.

A pump track and box jump elements with a focus on BMX, MTB and Scooter riders was noted. We avoided

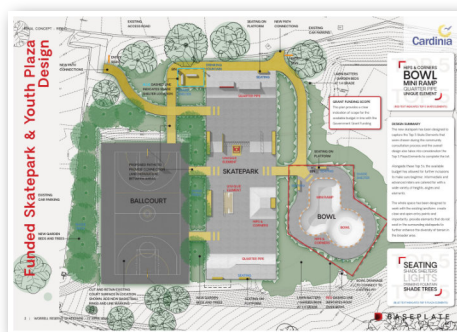
doubling up on these features as surrounding facilities (such as the Cockatoo pump track) will cater to these specifically.

Skill levels throughout the skatepark were reviewed and resulted in the street course being flipped. This gives a natural progression from left to right starting on the flat area of the MUGA court, to the beginner elements in the street course, intermediate elements in the street course and finally, to the advanced bowl on the right.

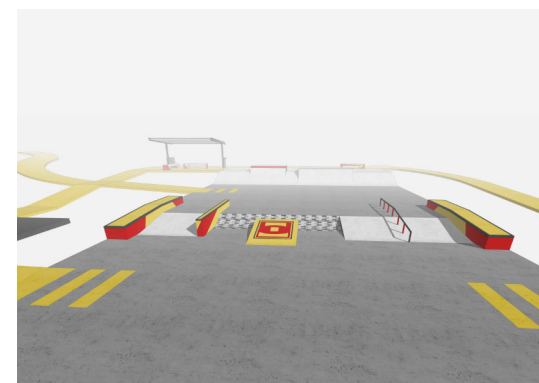
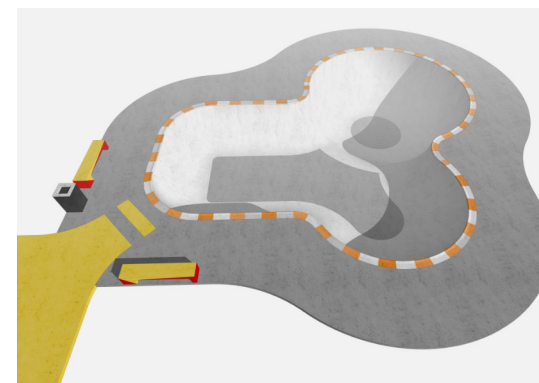
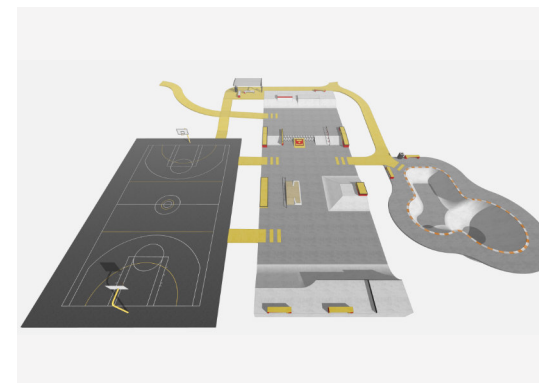
Other additional requests were captured during the consultation process, and some were able to be included, however without an increase in site and budget, they could not all be accommodated in the final concept design.

Design Response

The design (shown in part on this page) was developed to reflect the feedback received, and at the same time, match the available budget, site specific constraints and skatepark / youth plaza provision in the surrounding areas.



(The full concept design is available to be viewed as a separate document).



LIKE

BASKETBALL COURT
Wi-Fi Wi-Fi Wi-Fi

BOWL
RAMPS
Levels

Separation between beginners & advanced areas

Middle unique area

THAT THE SKATEPARK AND BASKETBALL COURT
ARE NEXT TO EACH OTHER

Quarter Pipe
JUMPS

Deep and shallow parts of the bowl

Shelter over the bowl

ONLINE
FEEDBACK

GOOD HIP, EURO, FLAT BAR, MANNY PAD

Don't use rails over 60mm diameter

MAKE THE BOWL BIGGER

DESIGN DOESN'T CONSIDER BMX AND SCOOTERS
- LOOKS LIKE IT'S DESIGNED BY SKATEBOARDERS

4ft BOX JUMP

BOWL SHAPE LOOKS FUN, BUT PLEASE MAKE 8FT
SECTION UP TO TO 10FT WITH VERT. IT WILL GIVE KIDS
A CHANCE TO ACTUALLY LEARN TO AIR PROPERLY

Great to see a fit for purpose bowl - the bigger, the better

Maybe too many features in the street - could get a bit tight

DEFINITELY WANT A NICE OPEN BIT OF FLAT GROUND

Maybe the hip(s) in the bowl could be a bit more pronounced

PUMP TRACK?

FLAT LEDGE ON PYRAMID

MORE FEATURES TO BOWL - SPINE, SKI JUMP, FLAT BANK, EXTENSIONS

Close in the bigger bowl - check the lines

DEEP SECTION SQUARE PLEASE, NOT CIRCLE

Transition extension to low bank at end of street course

Bowl looks to have great connecting flow lines and cater for a broad range of users

USE BIG TRANSITIONS (RADIUS) ON STREET QUARTERS

LITTLE MINI RAMP

MAKE HUBBA FLY OUT LEDGES FLAT

(Please note the greyed out text indicates items unable to be incorporated into the final design).

DISLIKE

THE COLOUR YELLOW

BOWL

NO PUMP TRACK

Platforms too close to road

PLATFORM SHOULD BE UNDER COVER

Additional Requests

DIRT JUMPS

ART (Indigenous, graffiti or someone from the community)

SPINE

MULCH JUMPS

MINI BASKETBALL RING - FOR DUNKING!

Pride Flag

BIKE JUMPS

BBQ - BBQ - BBQ

More MTB features

BIGGER RAMPS

More seating

Netball rings rather than soccer goals

Medical & Repair Station

PLANTS

JUNIOR AREA

BINS - BINS - BINS - BINS

MORE SHADE AREAS

Area for Roller Skating

VERT RAMP

Don't need Wi-Fi

SEPARATE THE BASKETBALL AND SKATEPARK SO
BALLS DON'T GO ON SKATEPARK AND SKATERS
DON'T USE BASKETBALL COURT

PICNIC TABLES

TUNNEL

NO SKATERS ALLOWED ON BASKETBALL COURT

Area for workshops

MINI-BOX / MINI-JUMP

TREES

FLOWER GARDEN BEDS

VENDING MACHINE

Mini Volcano in Bowl

DOME

BMX JUMPS

Smooth Grinding Stuff

LIGHTS

BIKE RACKS

Half Pipe

More Hubba Ledges

PARKOUR AREA

USE BLUE

Half metal / half concrete coping in bowl

MAKE ONE QUARTER PIPE A LOT HIGHER THAN
THE OTHERS

(Please note the greyed out text indicates items unable to be incorporated into the final design).



ABN 16 359 514 595

Mail 68 Mitchell Street Kyneton 3444

Phone +61 412 126 512

Email darren@baseplate.com.au

Web baseplate.com.au

Social [@baseplatedesign](https://www.instagram.com/baseplatedesign)

 **BASEPLATE**