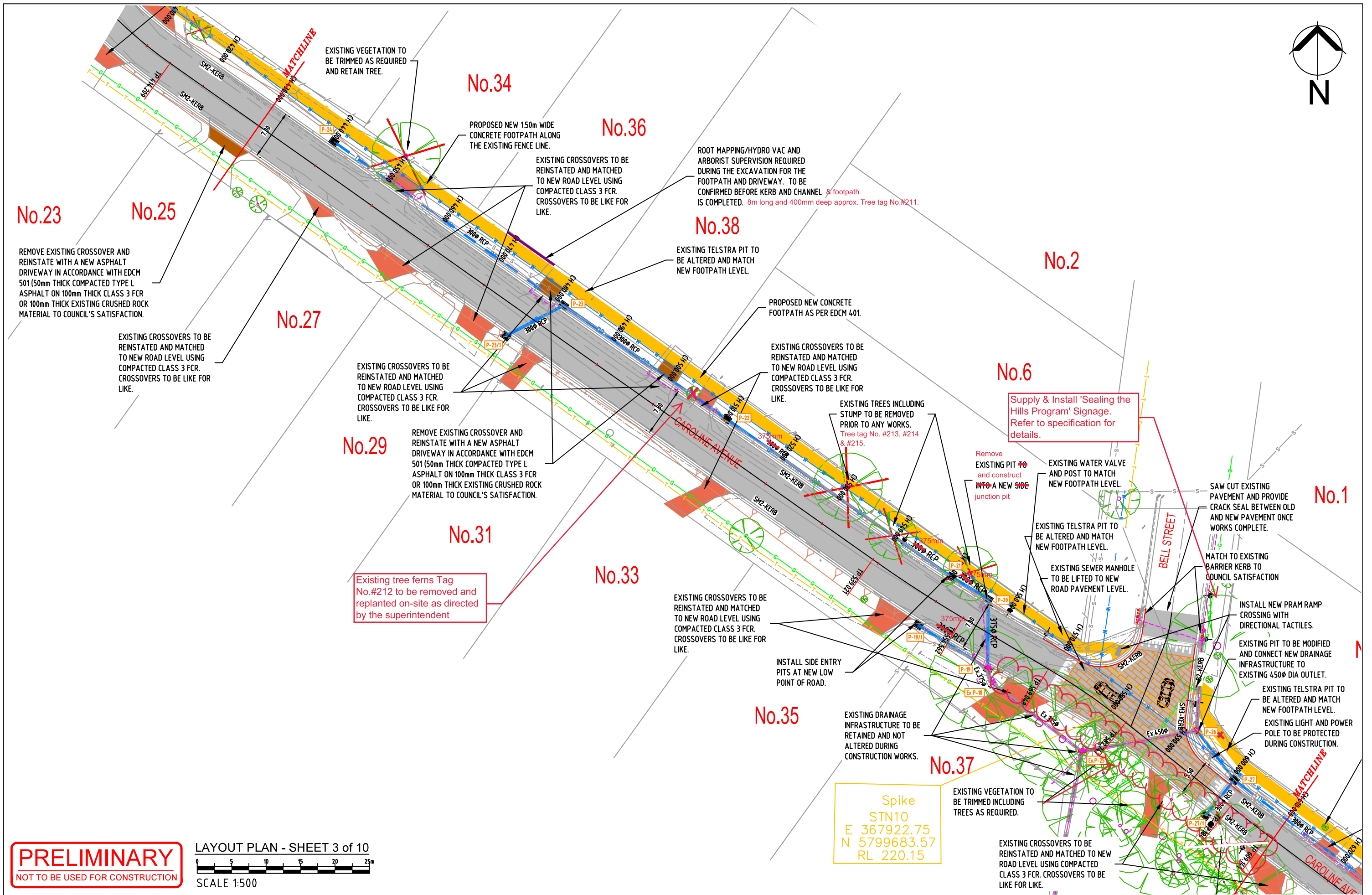



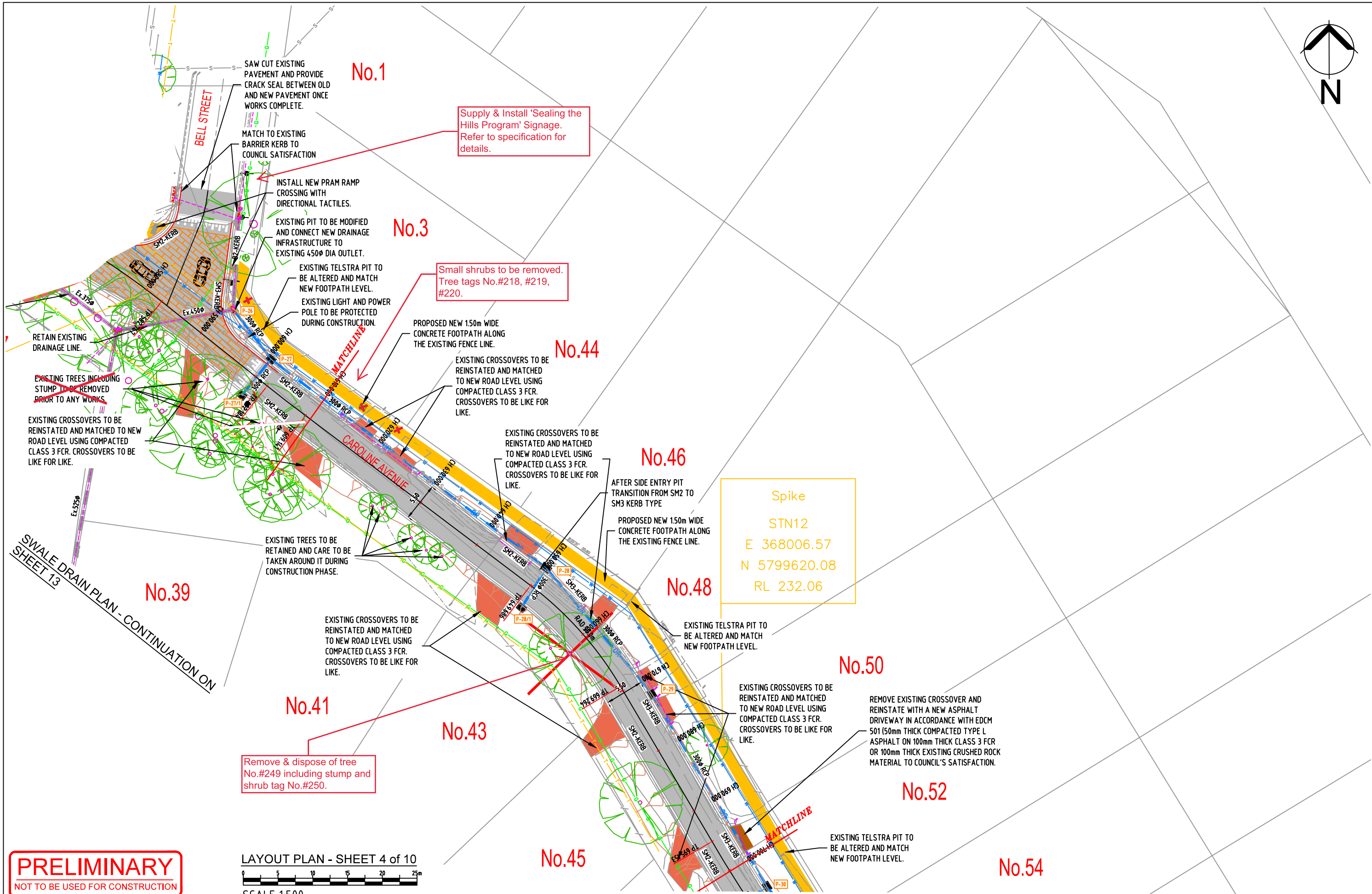
|            |      |                                    |   |                 |          |   |                                    |  |                 |
|------------|------|------------------------------------|---|-----------------|----------|---|------------------------------------|--|-----------------|
| Date:      | Rev. | Amendments:                        | <div>Legend</div> <div>EXISTING KERB AND CHANNEL</div> <div>PROPOSED KERB AND CHANNEL</div> <div>EXISTING DRAINS AND PITS</div> <div>PROPOSED DRAINS AND PITS</div> <div>PROPOSED PROPERTY INLET</div> <div>WATER MAINS AND FITTINGS</div> <div>SEWER</div> <div>GAS MAINS</div> <div>TELECOM CABLES AND PITS</div> <div>EX</div> <div>PROP</div> <div>EX</div> <div>PROP</div> <div>EX</div> <div>PROP</div> <div>EX</div> <div>PROP</div> <div>EX</div> <div>PROP</div> <div>THIS DOCUMENT/DRAWING IS PROTECTED BY FEDERAL COPYRIGHT LAW. COPYING IN ANY SHAPE OR FORM, WHOLE OR PART WITHOUT THE WRITTEN AUTHORISATION OF CRAIG CIVIL DESIGN PTY LTD. IS STRICTLY PROHIBITED. CIVIL PROCEEDINGS CLAIMING DAMAGES OR OTHER REMEDIES MAY BE BROUGHT AGAINST PERSONS FOUND COPYING THIS DOCUMENT.</div> | Design:         | Scale:   | <div>Craig Civil Design</div> <div>Civil Engineering Consultants &amp; Project Managers</div> <div>P.O. Box 1207, Narre Warren 3805</div> <div>mail@jamisoncraig.com.au</div> <div>Phone: 5995 4388</div> <div>Fax: 5995 5330</div> | CARDINIA SHIRE COUNCIL             |  | Drawing No CCD. |
|            |      |                                    |   | Date: JULY 2020 | AS SHOWN |   | CAROLINE AVENUE & BORONIA CRESCENT |  | 20021 05        |
|            |      |                                    |   | Checked:        | Approved |   | COCKATOO                           |  | Sheet           |
|            |      |                                    |   | Date: JULY 2020 | Date:    |   | ROAD RECONSTRUCTION WORKS          |  | Rev             |
| 29.07.2022 | C    | AMENDMENTS AS PER COUNCIL COMMENTS |   |                 |          |   | LAYOUT PLAN - CAROLINE AVENUE      |  | CDD Ref. No.    |
| 20.07.2022 | B    | AMENDMENTS AS PER COUNCIL COMMENTS |   |                 |          |   | 20021                              |  |                 |
| 01.04.2021 | A    | SUBMITTED FOR COMMENTS             |   |                 |          |   | 05                                 |  |                 |
|            |      |                                    |   |                 |          |   | 80                                 |  |                 |
|            |      |                                    |   |                 |          |   | C                                  |  |                 |
|            |      |                                    |   |                 |          |   |                                    |  |                 |
|            |      |                                    |   |                 |          |   |                                    |  |                 |
|            |      |                                    |   |                 |          |   |                                    |  |                 |
|            |      |                                    |   |                 |          |   |                                    |  |                 |
|            |      |                                    |   |                 |          |   |                                    |  |                 |
|            |      |                                    |   |                 |          |   |                                    |  |                 |
|            |      |                                    |   |                 |          |   |                                    |  |                 |
|            |      |                                    |   |                 |          |   |                                    |  |                 |
|            |      |                                    |   |                 |          |   |                                    |  |                 |
|            |      |                                    |   |                 |          |   |                                    |  |                 |
|            |      |                                    |   |                 |          |   |                                    |  |                 |
|            |      |                                    |   |                 |          |   |                                    |  |                 |
|            |      |                                    |   |                 |          |   |                                    |  |                 |
|            |      |                                    |   |                 |          |   |                                    |  |                 |
|            |      |                                    |   |                 |          |   |                                    |  |                 |
|            |      |                                    |   |                 |          |   |                                    |  |                 |
|            |      |                                    |   |                 |          |   |                                    |  |                 |
|            |      |                                    |   |                 |          |   |                                    |  |                 |
|            |      |                                    |   |                 |          |   |                                    |  |                 |
|            |      |                                    |   |                 |          |   |                                    |  |                 |
|            |      |                                    |   |                 |          |   |                                    |  |                 |
|            |      |                                    |   |                 |          |   |                                    |  |                 |
|            |      |                                    |   |                 |          |   |                                    |  |                 |
|            |      |                                    |   |                 |          |   |                                    |  |                 |
|            |      |                                    |   |                 |          |   |                                    |  |                 |
|            |      |                                    |   |                 |          |   |                                    |  |                 |
|            |      |                                    |   |                 |          |   |                                    |  |                 |
|            |      |                                    |   |                 |          |   |                                    |  |                 |
|            |      |                                    |   |                 |          |   |                                    |  |                 |
|            |      |                                    |   |                 |          |   |                                    |  |                 |
|            |      |                                    |   |                 |          |   |                                    |  |                 |
|            |      |                                    |   |                 |          |   |                                    |  |                 |
|            |      |                                    |   |                 |          |   |                                    |  |                 |
|            |      |                                    |   |                 |          |   |                                    |  |                 |
|            |      |                                    |   |                 |          |   |                                    |  |                 |
|            |      |                                    |   |                 |          |   |                                    |  |                 |
|            |      |                                    |   |                 |          |   |                                    |  |                 |
|            |      |                                    |   |                 |          |   |                                    |  |                 |
|            |      |                                    |   |                 |          |   |                                    |  |                 |
|            |      |                                    |   |                 |          |   |                                    |  |                 |
|            |      |                                    |   |                 |          |   |                                    |  |                 |
|            |      |                                    |   |                 |          |   |                                    |  |                 |
|            |      |                                    |   |                 |          |   |                                    |  |                 |
|            |      |                                    |   |                 |          |   |                                    |  |                 |
|            |      |                                    |   |                 |          |   |                                    |  |                 |
|            |      |                                    |   |                 |          |   |                                    |  |                 |
|            |      |                                    |   |                 |          |   |                                    |  |                 |
|            |      |                                    |   |                 |          |   |                                    |  |                 |
|            |      |                                    |   |                 |          |   |                                    |  |                 |
|            |      |                                    |   |                 |          |   |                                    |  |                 |
|            |      |                                    |   |                 |          |   |                                    |  |                 |
|            |      |                                    |   |                 |          |   |                                    |  |                 |
|            |      |                                    |   |                 |          |   |                                    |  |                 |
|            |      |                                    |   |                 |          |   |                                    |  |                 |
|            |      |                                    |   |                 |          |   |                                    |  |                 |
|            |      |                                    |   |                 |          |   |                                    |  |                 |
|            |      |                                    |   |                 |          |   |                                    |  |                 |
|            |      |                                    |   |                 |          |   |                                    |  |                 |
|            |      |                                    |   |                 |          |   |                                    |  |                 |
|            |      |                                    |   |                 |          |   |                                    |  |                 |
|            |      |                                    |   |                 |          |   |                                    |  |                 |
|            |      |                                    |   |                 |          |   |                                    |  |                 |
|            |      |                                    |   |                 |          |   |                                    |  |                 |
|            |      |                                    |   |                 |          |   |                                    |  |                 |
|            |      |                                    |   |                 |          |   |                                    |  |                 |
|            |      |                                    |   |                 |          |   |                                    |  |                 |
|            |      |                                    |   |                 |          |   |                                    |  |                 |
|            |      |                                    |   |                 |          |   |                                    |  |                 |
|            |      |                                    |   |                 |          |   |                                    |  |                 |
|            |      |                                    |   |                 |          |   |                                    |  |                 |
|            |      |                                    |   |                 |          |   |                                    |  |                 |
|            |      |                                    |   |                 |          |   |                                    |  |                 |
|            |      |                                    |   |                 |          |   |                                    |  |                 |
|            |      |                                    |   |                 |          |   |                                    |  |                 |
|            |      |                                    |   |                 |          |   |                                    |  |                 |
|            |      |                                    |   |                 |          |   |                                    |  |                 |
|            |      |                                    |   |                 |          |   |                                    |  |                 |
|            |      |                                    |   |                 |          |   |                                    |  |                 |
|            |      |                                    |   |                 |          |   |                                    |  |                 |
|            |      |                                    |   |                 |          |   |                                    |  |                 |
|            |      |                                    |   |                 |          |   |                                    |  |                 |
|            |      |                                    |   |                 |          |   |                                    |  |                 |
|            |      |                                    |   |                 |          |   |                                    |  |                 |
|            |      |                                    |   |                 |          |   |                                    |  |                 |
|            |      |                                    |   |                 |          |   |                                    |  |                 |
|            |      |                                    |   |                 |          |   |                                    |  |                 |
|            |      |                                    |   |                 |          |   |                                    |  |                 |
|            |      |                                    |   |                 |          |   |                                    |  |                 |
|            |      |                                    |   |                 |          |   |                                    |  |                 |
|            |      |                                    |   |                 |          |   |                                    |  |                 |
|            |      |                                    |   |                 |          |   |                                    |  |                 |
|            |      |                                    |   |                 |          |   |                                    |  |                 |
|            |      |                                    |   |                 |          |   |                                    |  |                 |
|            |      |                                    |   |                 |          |   |                                    |  |                 |
|            |      |                                    |   |                 |          |   |                                    |  |                 |
|            |      |                                    |   |                 |          |   |                                    |  |                 |
|            |      |                                    |   |                 |          |   |                                    |  |                 |
|            |      |                                    |   |                 |          |   |                                    |  |                 |
|            |      |                                    |   |                 |          |   |                                    |  |                 |
|            |      |                                    |   |                 |          |   |                                    |  |                 |
|            |      |                                    |   |                 |          |   |                                    |  |                 |
|            |      |                                    |   |                 |          |   |                                    |  |                 |
|            |      |                                    |   |                 |          |   |                                    |  |                 |
|            |      |                                    |   |                 |          |   |                                    |  |                 |
|            |      |                                    |   |                 |          |   |                                    |  |                 |
|            |      |                                    |   |                 |          |   |                                    |  |                 |
|            |      |                                    |   |                 |          |   |                                    |  |                 |
|            |      |                                    |   |                 |          |   |                                    |  |                 |
|            |      |                                    |   |                 |          |   |                                    |  |                 |
|            |      |                                    |   |                 |          |   |                                    |  |                 |
|            |      |                                    |   |                 |          |   |                                    |  |                 |
|            |      |                                    |   |                 |          |   |                                    |  |                 |
|            |      |                                    |   |                 |          |   |                                    |  |                 |
|            |      |                                    |   |                 |          |   |                                    |  |                 |
|            |      |                                    |   |                 |          |   |                                    |  |                 |
|            |      |                                    |   |                 |          |   |                                    |  |                 |
|            |      |                                    |   |                 |          |   |                                    |  |                 |
|            |      |                                    |   |                 |          |   |                                    |  |                 |
|            |      |                                    |   |                 |          |   |                                    |  |                 |
|            |      |                                    |   |                 |          |   |                                    |  |                 |
|            |      |                                    |   |                 |          |   |                                    |  |                 |
|            |      |                                    |   |                 |          |   |                                    |  |                 |
|            |      |                                    |   |                 |          |   |                                    |  |                 |






|            |      |  |                           |                          |      |     |   |     |  |          |           |                |                                    |   |                        |  |                  |
|------------|------|--|---------------------------|--------------------------|------|-----|---|-----|--|----------|-----------|----------------|------------------------------------|---|------------------------|--|------------------|
| Date:      | Rev. | Amendments:                            | Legend                    | WATER MAINS AND FITTINGS | EX   | --- | W | --- | THIS DOCUMENT/DRAWING IS PROTECTED BY FEDERAL COPYRIGHT LAW. COPYING IN ANY SHAPE OR FORM, WHOLE OR PART WITHOUT THE WRITTEN AUTHORISATION OF CRAIG CIVIL DESIGN PTY LTD. IS STRICTLY PROHIBITED. CIVIL PROCEEDINGS CLAIMING DAMAGES OR OTHER REMEDIES MAY BE BROUGHT AGAINST PERSONS FOUND COPYING THIS DOCUMENT. | Design:  | JULY 2020 | Scale:         | AS SHOWN                           | <div><br/>Craig Civil Design<br/>Civil Engineering Consultants &amp; Project Managers<br/>A.C.N. 159 212 245<br/>P.O. Box 1207, Narre Warren 3805<br/>mail@jamisoncraig.com.au<br/>Phone: 5995 4388<br/>Fax: 5995 5330</div> | CARDINIA SHIRE COUNCIL |  | Drawing No. CCD. |
|            |      |  | EXISTING KERB AND CHANNEL | SEWER                    | EX   | --- | S | --- |  | Checked: | JULY 2020 | Approved Date: | CAROLINE AVENUE & BORONIA CRESCENT |   | 20021 06               |  |                  |
| 03.08.2022 | D    | TURNING MOVEMENT SHOWN IN INTERSECTION | PROPOSED KERB AND CHANNEL | GAS MAINS                | EX   | --- | G | --- |  | Date:    | JULY 2020 |                | COCKATOO                           |   | Sheet 6 OF 80          |  |                  |
| 29.07.2022 | C    | AMENDMENTS AS PER COUNCIL COMMENTS     | EXISTING DRAINS AND PITS  | TELECOM CABLES AND PITS  | EX   | --- | T | --- |  | Datum:   | AHD       | MELWAY Ref:    | ROAD RECONSTRUCTION WORKS          |   | Rev D                  |  |                  |
| 20.07.2022 | B    | AMENDMENTS AS PER COUNCIL COMMENTS     | PROPOSED DRAINS AND PITS  |                          | PROP | --- | G | --- |  |          |           |                | LAYOUT PLAN - CAROLINE AVENUE      |   |                        |  |                  |
| 01.04.2021 | A    | SUBMITTED FOR COMMENTS                 | PROPOSED PROPERTY INLET   |                          | EX   | --- | T | --- |  |          |           |                |                                    |   | CCD Ref. No. 20021     |  |                  |

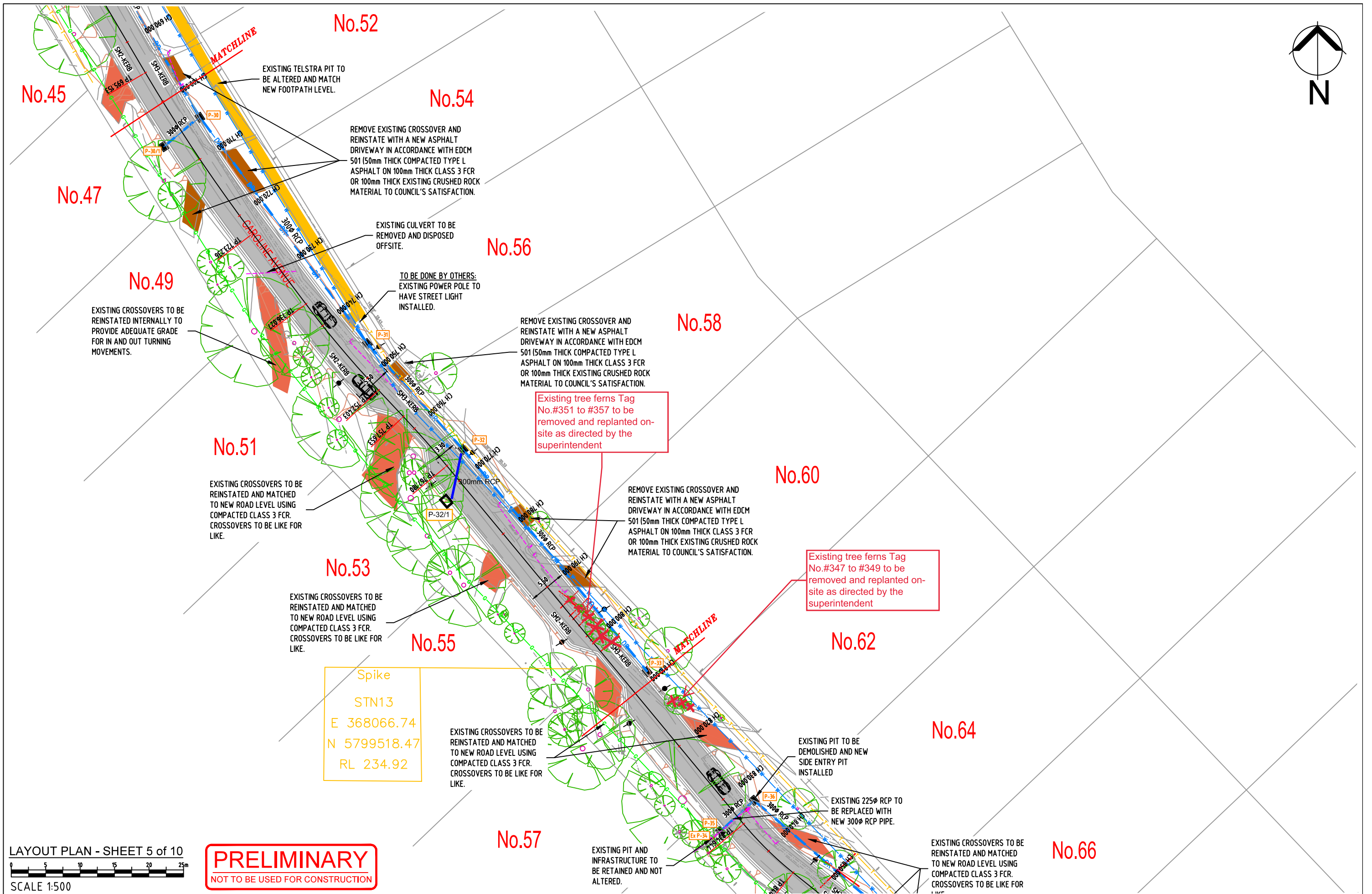




**PRELIMINARY**  
NOT TO BE USED FOR CONSTRUCTION

LAYOUT PLAN - SHEET 4 of 10  
SCALE 1:500

|            |      |                                    |  |  |  |  |  |   |  |   |  |  |
|------------|------|------------------------------------|--|--|--|--|--|---|--|---|--|--|
| Date:      | Rev. | Amendments:                        | <div>Legend</div> <div>EXISTING KERB AND CHANNEL</div> <div>PROPOSED KERB AND CHANNEL</div> <div>EXISTING DRAINS AND PITS</div> <div>PROPOSED DRAINS AND PITS</div> <div>PROPOSED PROPERTY INLET</div> | <div>WATER MAINS AND FITTINGS</div> <div>SEWER</div> <div>GAS MAINS</div> <div>TELECOM CABLES AND PITS</div> | <div>EX ---W---</div> <div>PROP ---W---</div> <div>EX ---S---O</div> <div>PROP ---S---</div> <div>EX ---G---</div> <div>PROP ---G---</div> <div>EX ---T---E</div> <div>PROP ---T---E</div> | <div>THIS DOCUMENT/DRAWING IS PROTECTED BY FEDERAL COPYRIGHT LAW. COPYING IN ANY SHAPE OR FORM, WHOLE OR PART WITHOUT THE WRITTEN AUTHORIZATION OF CRAIG CIVIL DESIGN PTY LTD. IS STRICTLY PROHIBITED.</div> <div>CIVIL PROCEEDINGS CLAIMING DAMAGES OR OTHER REMEDIES MAY BE BROUGHT AGAINST PERSONS FOUND COPYING THIS DOCUMENT.</div> | <div>Design:</div> <div>Date: JULY 2020</div> <div>Checked:</div> <div>Date: JULY 2020</div> <div>Datum: AHD</div> | <div>Scale: AS SHOWN</div> <div>Approved:</div> <div>Date:</div> <div>MELWAY Ref:</div> | <div></div> <div>Craig Civil Design</div> <div>Civil Engineering Consultants &amp; Project Managers</div> <div>A.C.N. 199 212 245</div> <div>P.O. Box 1207, Narre Warren 3805</div> <div>mail@jamisoncraig.com.au</div> <div>Phone: 5995 4388</div> <div>Fax: 5995 5330</div> | <div>CARDINIA SHIRE COUNCIL</div> <div>CAROLINE AVENUE &amp; BORONIA CRESCENT</div> <div>COCKATOO</div> <div>ROAD RECONSTRUCTION WORKS</div> <div>LAYOUT PLAN - CAROLINE AVENUE</div> | <div>Drawing No CCD.</div> <div>20021_07</div> <div>Sheet 7 OF 80</div> <div>Rev C</div> <div>CCD Ref. No. 20021</div> |  |
| 29.07.2022 | C    | AMENDMENTS AS PER COUNCIL COMMENTS |  |  |  |  |  |   |  |   |  |  |
| 20.07.2022 | B    | AMENDMENTS AS PER COUNCIL COMMENTS |  |  |  |  |  |   |  |   |  |  |
| 01.04.2021 | A    | SUBMITTED FOR COMMENTS             |  |  |  |  |  |   |  |   |  |  |



SCALE 1:500

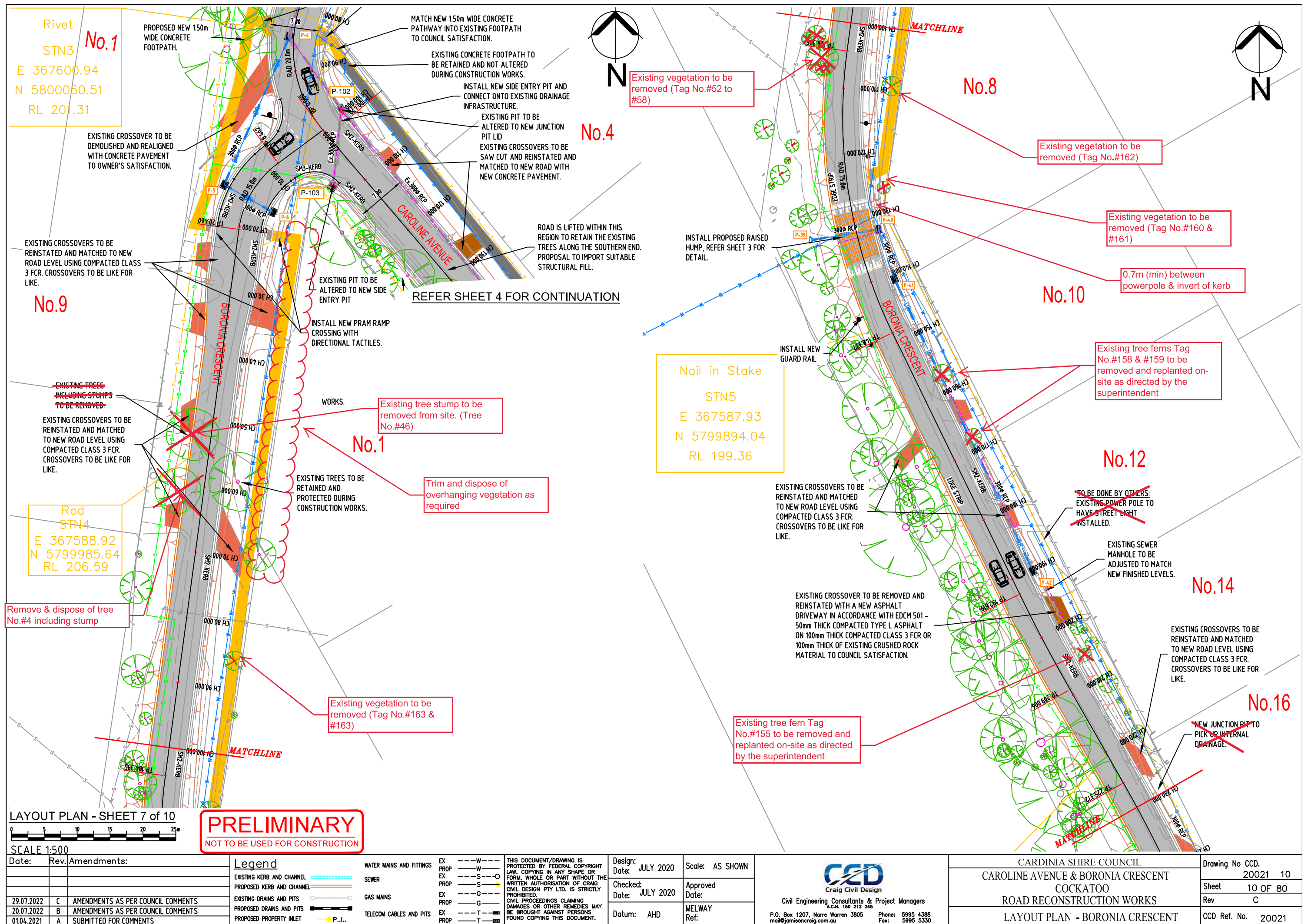
---

|            |      |                                    |  |  |   |   |   |
|------------|------|------------------------------------|--|--|---|---|---|
| Date:      | Rev. | Amendments:                        | <div>Legend</div> <div><div>WATER MAINS AND FITTINGS</div><div>EX ---W---<br/>PROP ---W---<br/>EX ---S---<br/>PROP ---S---<br/>EX ---G---<br/>PROP ---G---<br/>EX ---T---<br/>PROP ---T---</div><div>SEWER</div><div>EXISTING KERB AND CHANNEL<br/>PROPOSED KERB AND CHANNEL</div><div>EXISTING DRAINS AND PITS<br/>PROPOSED DRAINS AND PITS<br/>PROPOSED PROPERTY INLET</div><div>GAS MAINS</div><div>TELECOM CABLES AND PITS</div><div></div></div> <div><div>THIS DOCUMENT/DRAWING IS PROTECTED BY FEDERAL COPYRIGHT LAW. COPYING IN ANY SHAPE OR FORM, WHOLE OR PART WITHOUT THE WRITTEN AUTHORISATION OF CRAIG CIVIL DESIGN PTY LTD, IS STRICTLY PROHIBITED.</div><div>CIVIL PROCEEDINGS CLAIMING DAMAGES OR OTHER REMEDIES MAY BE BROUGHT AGAINST PERSONS FOUND COPYING THIS DOCUMENT.</div></div> | <div>Design: JULY 2020</div> <div>Date:</div> <div>Checked: JULY 2020</div> <div>Date:</div> <div>Datum: AHD</div> | <div>Scale: AS SHOWN</div> <div>Approved Date:</div> <div>MELWAY Ref:</div> <div><div>Civil Engineering Consultants &amp; Project Managers</div><div>A.C.N. 159 212 245</div><div>P.O. Box 1207, Narre Warren 3805</div><div>mail@craigcivil.com.au</div><div>Phone: 5995 4388</div><div>Fax: 5995 5330</div></div> | <div>CARDINIA SHIRE COUNCIL</div> <div>CAROLINE AVENUE &amp; BORONIA CRESCENT</div> <div>COCKATOO</div> <div>ROAD RECONSTRUCTION WORKS</div> <div>LAYOUT PLAN - CAROLINE AVENUE</div> | <div>Drawing No. CCD.</div> <div>20021_08</div> <div>Sheet 8 OF 80</div> <div>Rev C</div> <div>CCD Ref. No. 20021</div> |
| 29.07.2022 | C    | AMENDMENTS AS PER COUNCIL COMMENTS |  |  |   |   |   |
| 20.07.2022 | A    | AMENDMENTS AS PER COUNCIL COMMENTS |  |  |   |   |   |
| 01.04.2021 | B    | SUBMITTED FOR COMMENTS             |  |  |   |   |   |
|            |      |                                    |  |  |   |   |   |

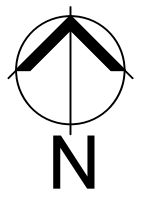
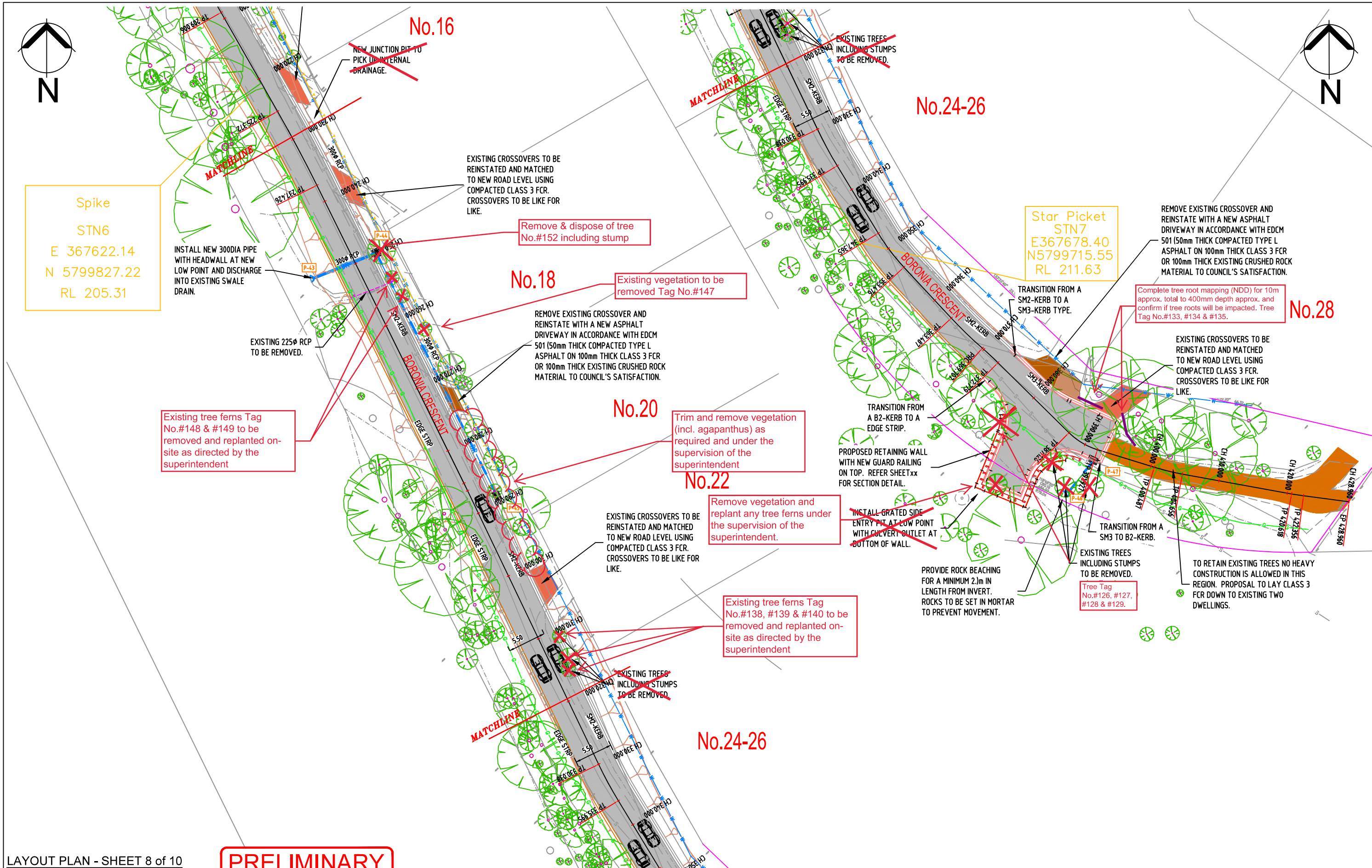












Spike  
STN6  
E 367622.14  
N 5799827.22  
RL 205.31

Star Picket  
STN7  
E367678.40  
N5799715.55  
RL 211.63

LAYOUT PLAN - SHEET 8 of 10  
SCALE 1:500

**PRELIMINARY**  
NOT TO BE USED FOR CONSTRUCTION

| Date:      | Rev. | Amendments:                        |
|------------|------|------------------------------------|
| 24.08.2022 | E    | AMENDMENTS AS PER COUNCIL COMMENTS |
| 03.08.2022 | D    | AMENDMENTS AS PER COUNCIL COMMENTS |
| 29.07.2022 | C    | AMENDMENTS AS PER COUNCIL COMMENTS |
| 20.07.2022 | B    | AMENDMENTS AS PER COUNCIL COMMENTS |
| 01.04.2021 | A    | SUBMITTED FOR COMMENTS             |

| Legend                    |     |
|---------------------------|-----|
| EXISTING KERB AND CHANNEL | --- |
| PROPOSED KERB AND CHANNEL | --- |
| EXISTING DRAINS AND PITS  | --- |
| PROPOSED DRAINS AND PITS  | --- |
| PROPOSED PROPERTY INLET   | --- |

|                          |              |
|--------------------------|--------------|
| WATER MAINS AND FITTINGS | EX --- W --- |
| SEWER                    | EX --- S --- |
| GAS MAINS                | EX --- G --- |
| TELECOM CABLES AND PITS  | EX --- T --- |

|  |  |  |
|--|--|--|
| THIS DOCUMENT/DRAWING IS PROTECTED BY FEDERAL COPYRIGHT LAW. COPYING IN ANY SHAPE OR FORM, WHOLE OR PART WITHOUT THE WRITTEN AUTHORIZATION OF CRAIG CIVIL DESIGN PTY LTD. IS STRICTLY PROHIBITED. CIVIL PROCEEDINGS CLAIMING DAMAGES OR OTHER REMEDIES MAY BE BROUGHT AGAINST PERSONS FOUND COPYING THIS DOCUMENT. | Design: JULY 2020<br>Date: JULY 2020<br>Checked: JULY 2020<br>Datum: AHD | Scale: AS SHOWN<br>Approved Date:<br>MELWAY Ref: |
|--|--|--|

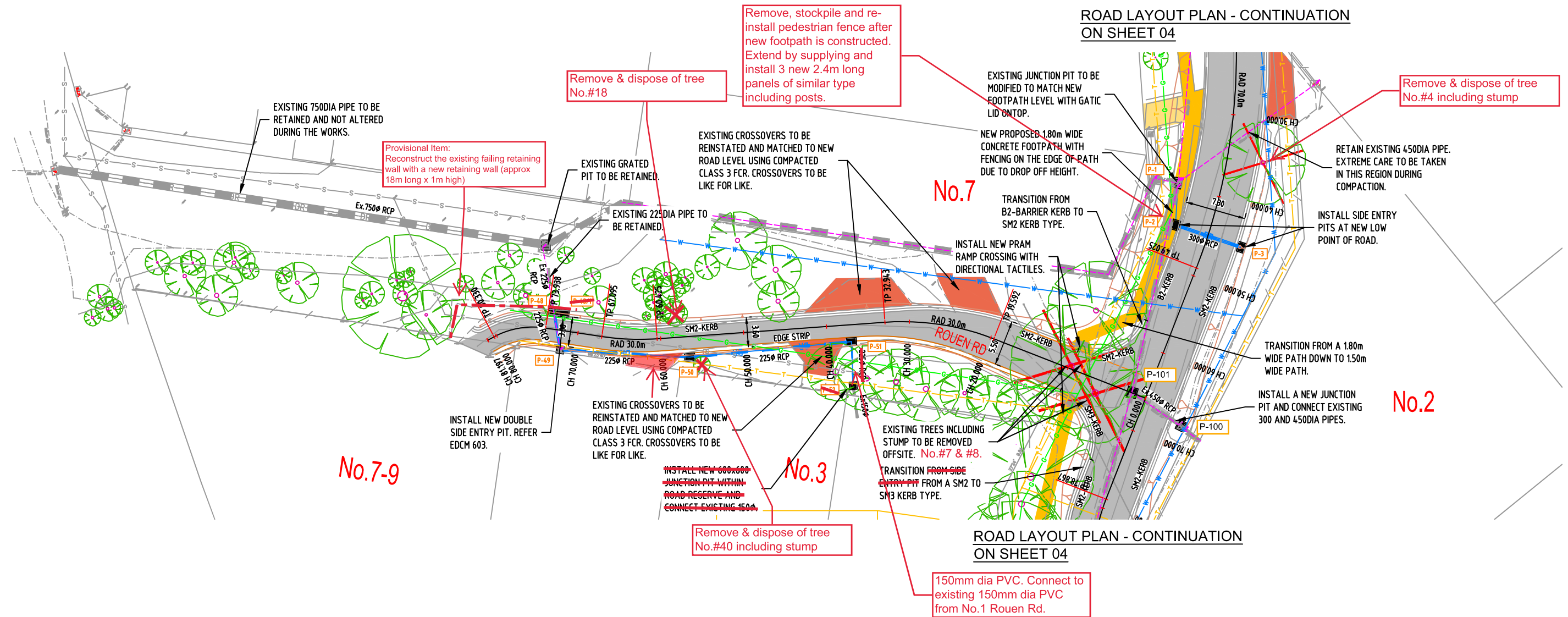


Craig Civil Design  
Civil Engineering Consultants & Project Managers  
A.C.N. 159 212 245  
P.O. Box 1207, Narre Warren 3805  
mail@jamiesoncraig.com.au

Phone: 5995 4388  
Fax: 5995 5330

|                                    |                    |
|------------------------------------|--------------------|
| CARDINIA SHIRE COUNCIL             | Drawing No CCD.    |
| CAROLINE AVENUE & BORONIA CRESCENT | 20021 11           |
| COCKATOO                           | Sheet 11 OF 80     |
| ROAD RECONSTRUCTION WORKS          | Rev E              |
| LAYOUT PLAN - BORONIA CRESCENT     | CCD Ref. No. 20021 |





LAYOUT PLAN - SHEET 9 of 10



SCALE 1:500

Date: Rev. Amendments:

| Date       | Rev. | Amendments                         |
|------------|------|------------------------------------|
| 03.08.2022 | D    | AMENDMENTS AS PER COUNCIL COMMENTS |
| 29.07.2022 | C    | AMENDMENTS AS PER COUNCIL COMMENTS |
| 20.07.2022 | B    | AMENDMENTS AS PER COUNCIL COMMENTS |
| 01.04.2021 | A    | SUBMITTED FOR COMMENTS             |

**PRELIMINARY**  
NOT TO BE USED FOR CONSTRUCTION

#### Legend

|                           |     |
|---------------------------|-----|
| EXISTING KERB AND CHANNEL | --- |
| PROPOSED KERB AND CHANNEL | --- |
| EXISTING DRAINS AND PITS  | --- |
| PROPOSED DRAINS AND PITS  | --- |
| PROPOSED PROPERTY INLET   | --- |

#### WATER MAINS AND FITTINGS

|                         |     |
|-------------------------|-----|
| SEWER                   | --- |
| GAS MAINS               | --- |
| TELECOM CABLES AND PITS | --- |

|      |     |
|------|-----|
| EX   | --- |
| PROP | --- |
| EX   | --- |
| PROP | --- |
| EX   | --- |
| PROP | --- |

THIS DOCUMENT/DRAWING IS PROTECTED BY FEDERAL COPYRIGHT LAW. COPYING IN ANY SHAPE OR FORM, WHOLE OR PART WITHOUT THE WRITTEN AUTHORISATION OF CRAIG CIVIL DESIGN PTY LTD. IS STRICTLY PROHIBITED. CIVIL PROCEEDINGS CLAIMING DAMAGES OR OTHER REMEDIES MAY BE BROUGHT AGAINST PERSONS FOUND COPYING THIS DOCUMENT.

Design: MARCH 2021  
Date: MARCH 2021  
Checked: MARCH 2021  
Datum: AHD

Scale: AS SHOWN  
Approved Date:  
MELWAY Ref:

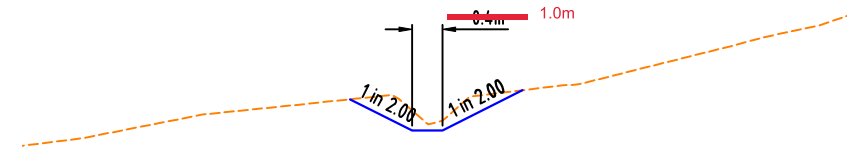


Civil Engineering Consultants & Project Managers  
P.O. Box 1207, Narre Warren 3805  
mail@jamisoncraig.com.au  
Phone: 5995 4388  
Fax: 5995 5330

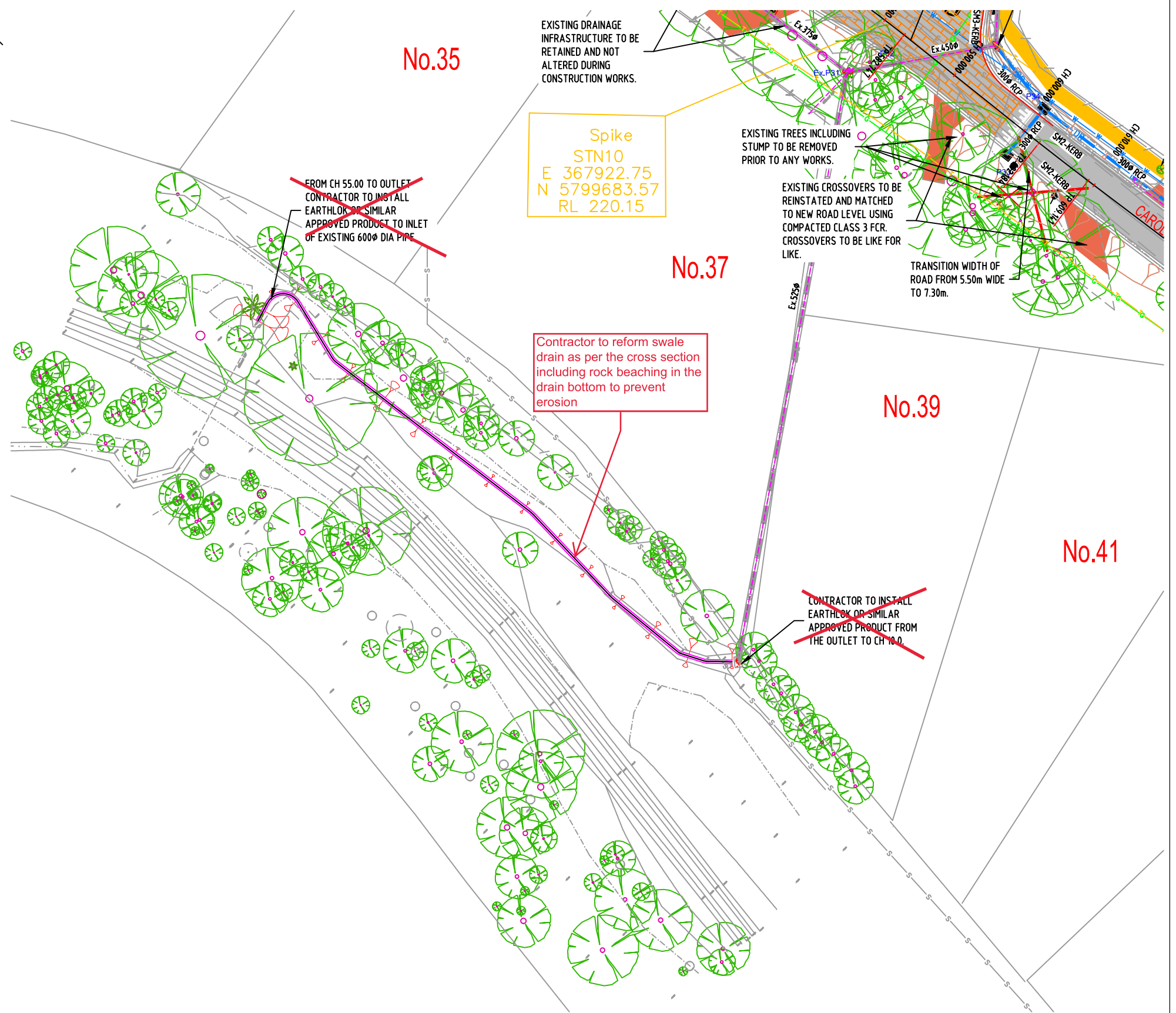
CARDINIA SHIRE COUNCIL  
CAROLINE AVENUE & BORONIA CRESCENT  
COCKATOO  
ROAD RECONSTRUCTION WORKS  
LAYOUT PLAN - ROUEN ROAD

Drawing No CCD.  
20021 12  
Sheet 12 OF 80  
Rev D  
CCD Ref. No. 20021





TYPICAL SECTION DETAIL OF SWALE DRAIN



LAYOUT PLAN - SHEET 10 of 10



SCALE 1:500

Date: Rev. Amendments:

01.04.2021 A SUBMITTED FOR COMMENTS

**PRELIMINARY**

NOT TO BE USED FOR CONSTRUCTION

**Legend**

EXISTING KERB AND CHANNEL  
PROPOSED KERB AND CHANNEL  
EXISTING DRAINS AND PITS  
PROPOSED DRAINS AND PITS  
PROPOSED PROPERTY INLET  
P.I.L.

WATER MAINS AND FITTINGS  
SEWER  
GAS MAINS  
TELECOM CABLES AND PITS

EX ---W---  
PROP ---W---  
EX ---S---  
PROP ---S---  
EX ---G---  
PROP ---G---  
EX ---T---  
PROP ---T---

THIS DOCUMENT/DRAWING IS PROTECTED BY FEDERAL COPYRIGHT LAW. COPYING IN ANY SHAPE OR FORM, WHOLE OR PART WITHOUT THE WRITTEN AUTHORISATION OF CRAIG CIVIL DESIGN PTY LTD. IS STRICTLY PROHIBITED. CIVIL PROCEEDINGS CLAIMING DAMAGES OR OTHER REMEDIES MAY BE BROUGHT AGAINST PERSONS FOUND COPYING THIS DOCUMENT.

Design: MARCH 2021  
Date: MARCH 2021  
Checked: MARCH 2021  
Date: MARCH 2021  
Datum: AHD

Scale: AS SHOWN  
Approved Date:  
MELWAY Ref:



Civil Engineering Consultants & Project Managers  
A.C.N. 159 212 245  
P.O. Box 1207, Narre Warren 3805  
mail@jamisoncraig.com.au  
Phone: 5995 4388  
Fax: 5995 5330

CARDINIA SHIRE COUNCIL  
CAROLINE AVENUE & BORONIA CRESCENT  
COCKATOO  
ROAD RECONSTRUCTION WORKS  
LAYOUT PLAN - CAROLINE AVE SWALE DRAIN

Drawing No CCD.  
20021 13  
Sheet 13 OF 80  
Rev A  
CCD Ref. No. 20021