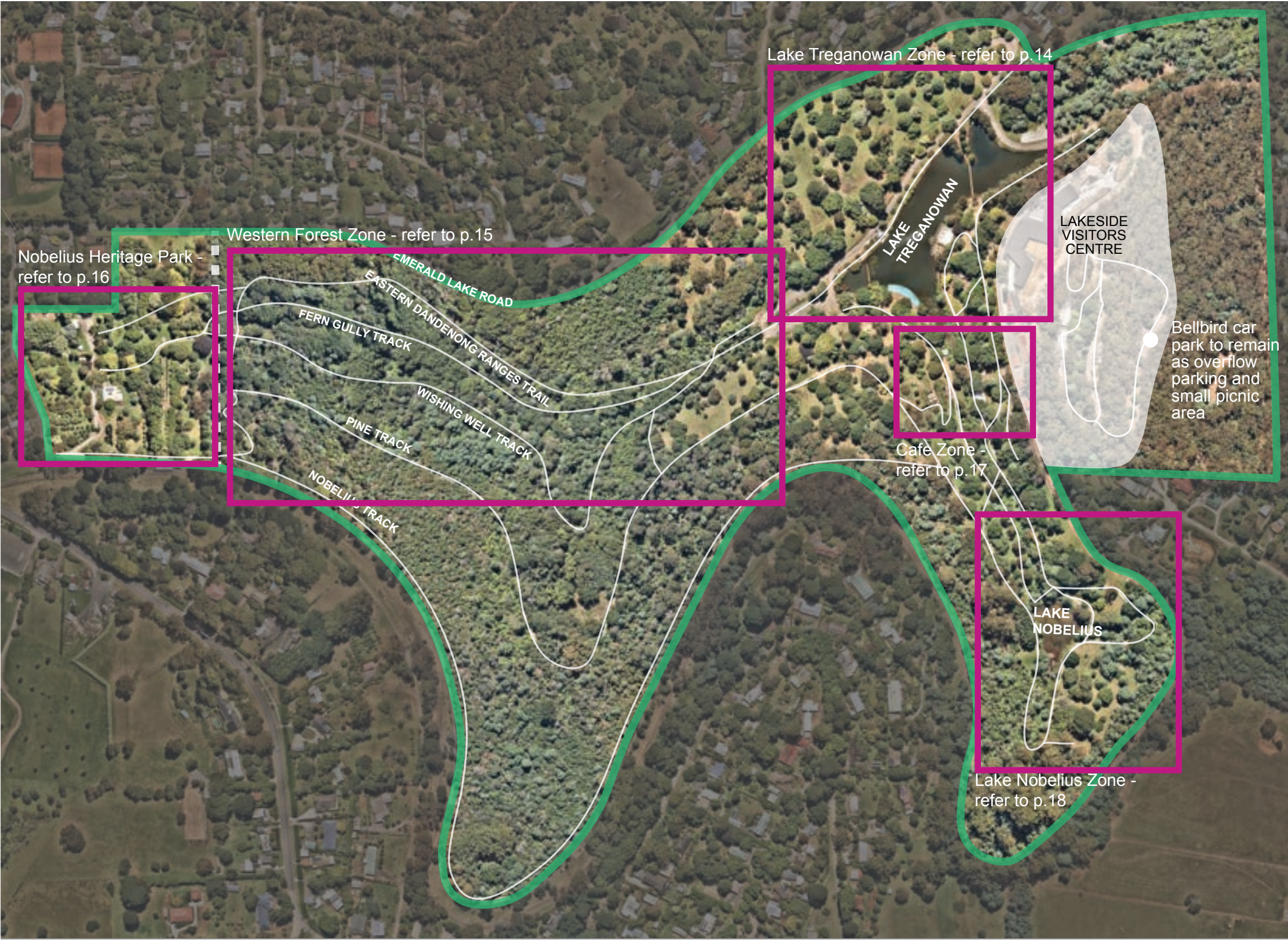
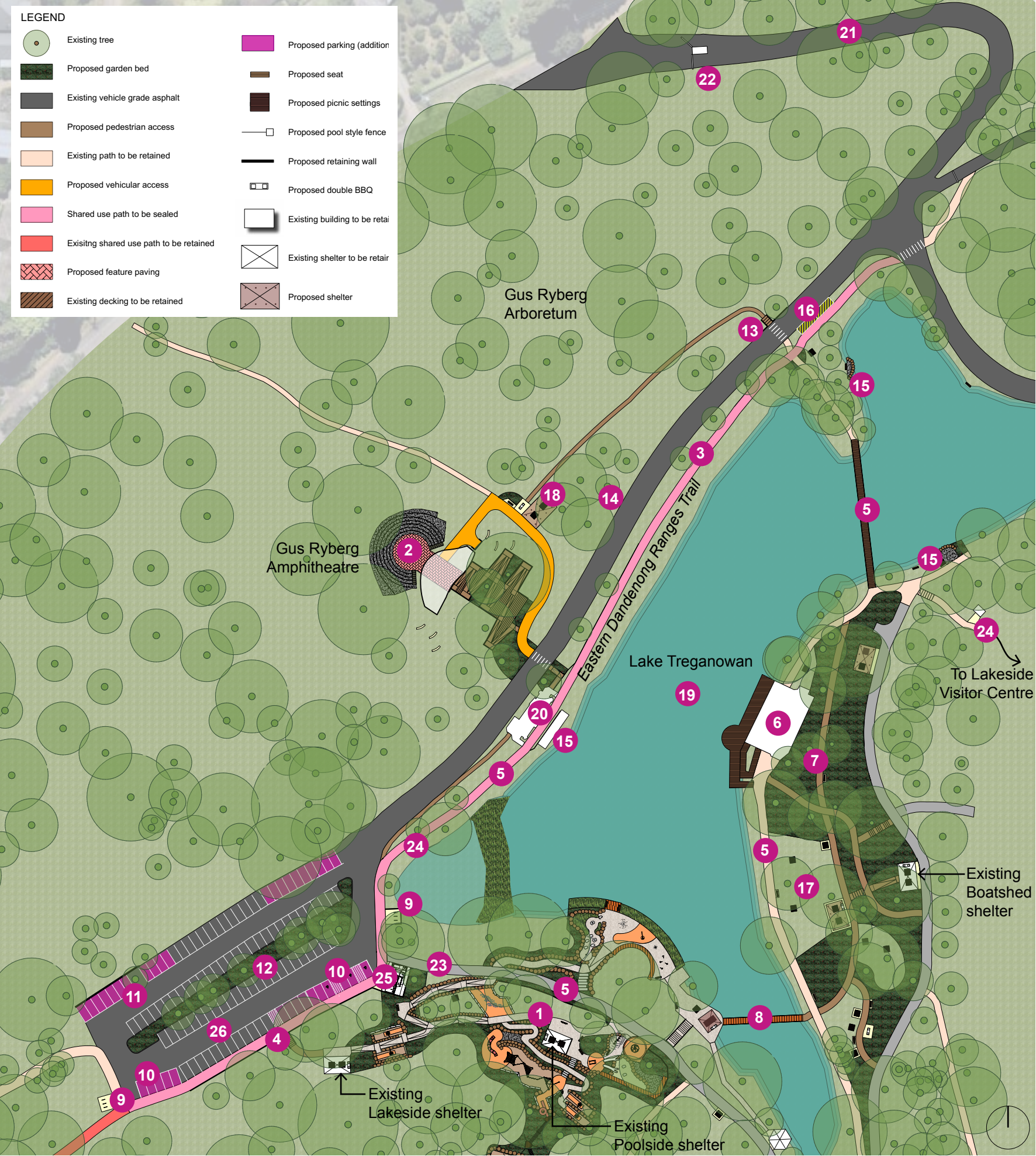


6.1 Whole of site action items



- 1 Provide interpretive signage at all park entries and throughout the park for information and educational purposes. Consider the historical significance of the precinct and how that translates to the present day including Indigenous history and post settlement heritage
- 2 Develop a consistent signage suite for the park. Implement easily accessible gateway, wayfinding, etiquette, identification and interpretive signage across the site
- 3 Consider programming opportunities within the park including educational programs, organised recreational activities and classes, arts and cultural events, festivals and markets
- 4 Upgrade the existing paths to establish safe and accessible network where possible. Consider the use of boardwalks or 'mini-mesh' as required to protect existing trees and root systems
- 5 Upgrade all existing furniture to Council's preferred furniture suite including DDA compliant furniture including drinking fountains at all activity nodes and picnic tables at Bellbird Picnic Area
- 6 Update the 'Areas of Cultural Heritage Sensitivity' overlay within Emerald Lake Precinct to include the overall extent of the Wattle Creek, Paternoster Creek and Mackenzie Creek
- 7 Implement and undertake the recommendations outlined in the Arborist report including maintaining and improving weed and pest management
- 8 Ensure the structural integrity of lake edges are maintained or improved in all works
- 9 Prepare a strategy for long-term replacement planting of nursery and exotic trees in accordance with the Conservation Management Plan
- 10 Restrict vehicular access within the park to maintenance and emergency vehicles only to reduce traffic and improve pedestrian safety
- 11 Engage traditional owners to add value to the precinct upgrades (including interpretive signage and artwork).
- 12 Consider Crime Prevention Through Environmental Design (CPTED) principles in future development of the park to ensure the safety of all users
- 13 Continue to work with Friends of Emerald Lake Park with the removal of invasive woody trees and native revegetation works
- 14 Complete a fire management strategy for the site that will compliment the Emergency Management Plan for extreme weather and fire which is already in place.
- 15 Develop a waste management plan for the precinct

6.2 Lake Treganowan Zone



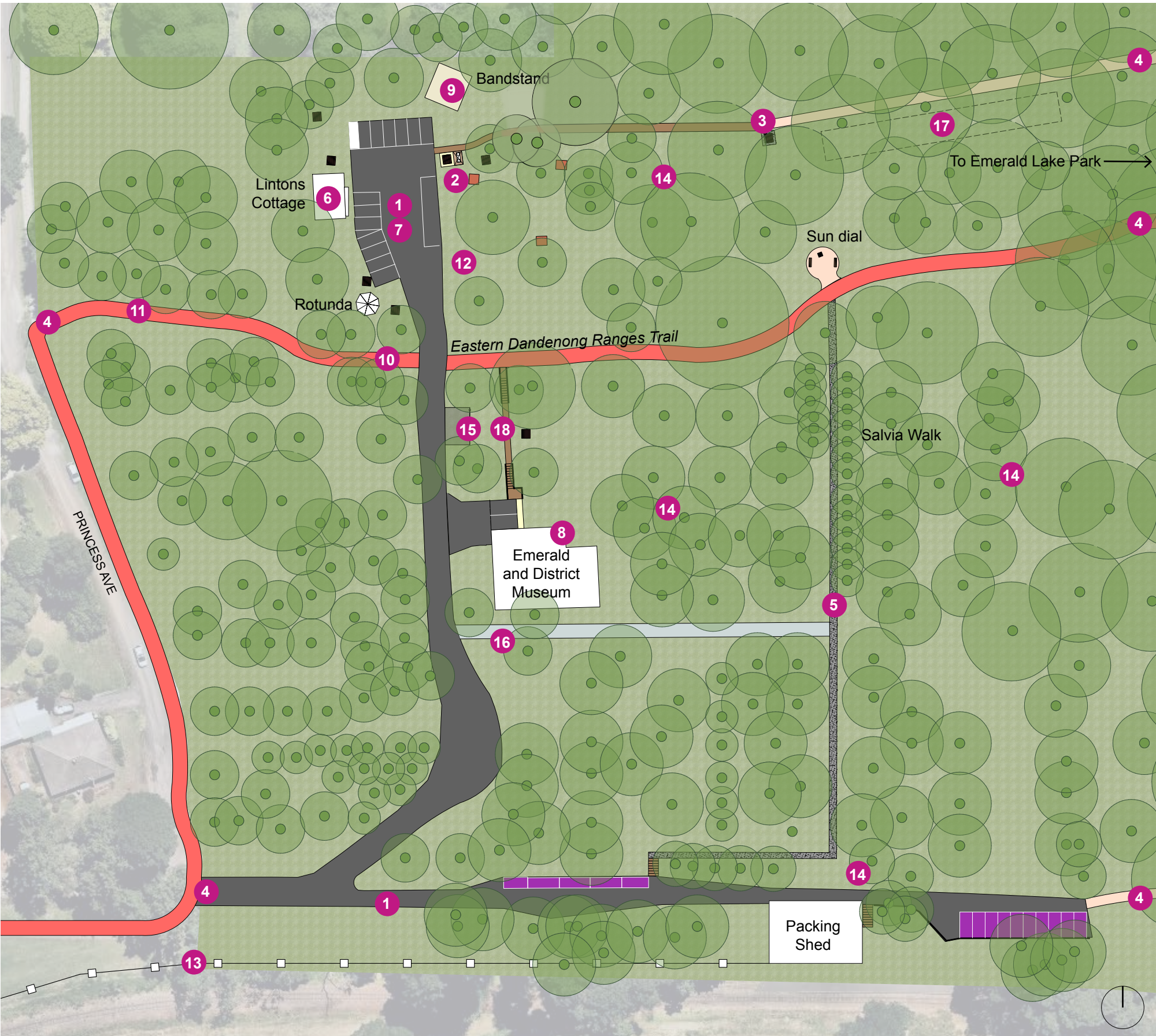
- 1 Upgrade existing playground facilities to a 'regional' level playspace with a broad range of play opportunities for all ages and abilities including water play, accessible play, nature play and a Changing Places Facility (subject to external funding). Refer to section 7
- 2 Enhance the Gus Ryberg Amphitheatre to include a sound shell with lighting, shelter and a stage area, all abilities access (i.e. blended ramp and stairs), vehicle access, pedestrian priority road crossing, and upgrade the existing seating facilities to composite timber seats (including seating areas for all abilities). As required, relocate or replace the murals which depict the precinct's history.
- 3 Define the Eastern Dandenong Ranges Trail (EDRT) with sealed surfacing and wayfinding and etiquette signage. Upgrade the trail as required to meet regional standards (noting that this may require removal/ relocation of existing trees), refer to Appendix B
- 4 Connect the EDRT through the Lakeside Carpark. Construct a retaining wall along the southern edge as required
- 5 Define an all abilities loop path around the lake with sealed surfacing, lighting, and wayfinding and etiquette signage
- 6 Investigate developing the Lakeside Office building to 'Emerald Lake Boathouse.' Opportunity to retain the paddle boats, part of the Council office and to include a waterside restaurant or cafe (pending market interest for private investment).
- 7 Upgrade the paths, drainage and garden bed areas behind the Lakeside building with accessible paths and new planted areas including the removal of fencing and edging to garden bed areas. Consider ground covers and plants to prevent erosion of garden beds and to keep sight lines open to encourage CPTED
- 8 New bridge connecting the playspace to the loop path around the lake and to allow the bandstand to be blocked off to pedestrian traffic during events and performances
- 9 Bike parking, drink fountains and bike repair station near the EDRT
- 10 Realign carparking bays along the southern edge of the Lakeside Carpark to allow for the EDRT connection and create additional car parking bays, including disabled parking bays
- 11 Stabilise embankment with a retaining wall and create more carparking bays
- 12 Provide lighting to Lakeside Carpark and retain existing parking meter
- 13 Construct stairs with safety balustrades to the top of the embankment and a new path to provide safe access to the Gus Ryberg Arboretum and amphitheatre. Include a pedestrian crossing as required
- 14 Embankment stablisation works north of the entry road including a retaining wall as required
- 15 To protect the bank of the lake, establish dedicated fishing areas and stablise areas that have been damaged
- 16 Establish an informal loading zone near the northern section of the lake to create a drop off area. Stablise lake edge as required
- 17 Extend the picnic area with a shelter that has two picnic tables, a double BBQ and picnic tables
- 18 New shelter with two picnic tables near the existing BBQs
- 19 Undertake desilting works at Lake Treganowan as required to maintain lake health
- 20 Upgrade the historic toilet facilities in-line with current health and safety standards and heritage requirements. Provide DDA access from the EDRT and the Lakeside Carpark
- 21 Continue to advocate for the widening of Emerald Lake Road with a pedestrian path to the township
- 22 Provide a CCTV camera at the boom gate entry to the park
- 23 Create a unique and contemporary gateway at the park entrance that reflects the precinct character
- 24 Provide event lighting from the Lakeside Carpark to the Gus Ryberg amphitheatre and to the Lakeside Visitor Centre
- 25 Toilet block with Changing Places facility (subject to external funding)
- 26 Investigate installation of charging points for electric vehicles (at Lakeside Car Park) and e-bikes (close to the EDRT)

6.3 Western Forest Zone



- 1 Define the Eastern Dandenong Ranges Trail through the park with consistent wayfinding and etiquette signage. Retain existing surface through the western forest
- 2 Encourage imaginative play opportunities to the existing informal nature play area in the western forest, and the addition of wide wooden steps. Ensure CPTED principles are considered.
- 3 Preserve and enhance significant natural assets in the precinct. Undertake an additional tree survey to identify trees and tree groups along the tracks in the western forest in accordance with Emerald Lake Park Conservation Management Plan
- 4 Raise the ground level of the Pines Amphitheatre and locate rock seats to create an informal seating area for groups. Provide an accessible path to provide a safe connection for all users
- 5 Provide bird hides for bird watchers and nature photographers in different areas of the park
- 6 Repair areas throughout the Western Forest that have been damaged by mountain biking. Install barricades to encourage bike riders to use the EDRT and prevent them from accessing problem areas

6.4 Nobelius Heritage Park

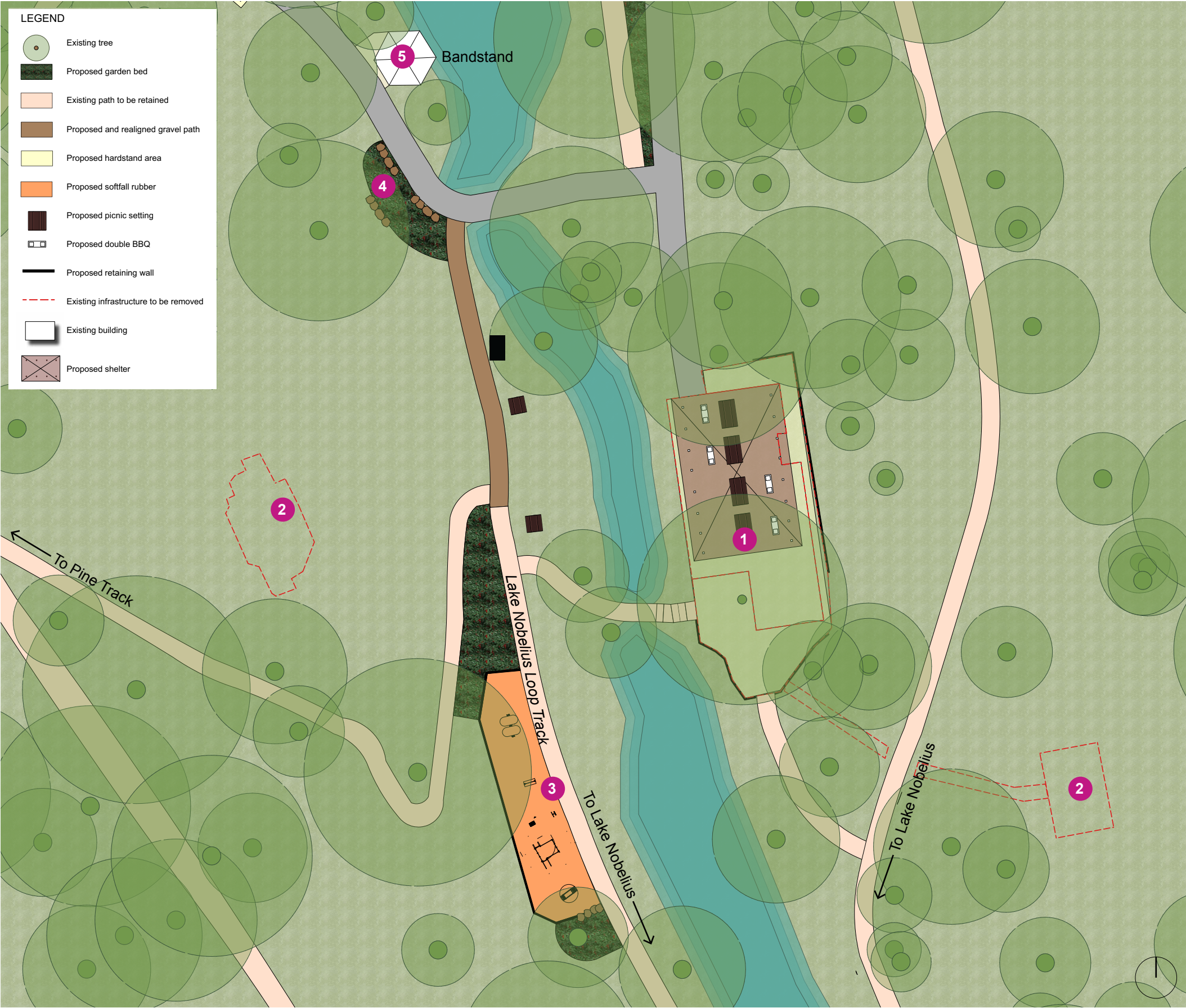


- 1 Upgrade existing access road and carpark as proposed
- 2 More picnic tables near the bandstand area
- 3 Strengthen the path connection between Emerald Lake Park into Nobelius Heritage Park with wayfinding signage
- 4 Provide gateway signage/ feature at the entrances to the Nobelius Heritage Park
- 5 Provide an informal path connection with wayfinding signage from the Eastern Dandenong Ranges Trail to the packing shed
- 6 Upgrade the exterior of Linton's Cottage and include interpretive signage to explain its historical significance to the site. Investigate opportunities to improve the interior to meet future community needs
- 7 Provide carpark lighting
- 8 Investigate an upgrade to the Museum toilets. Explore options for adding a third cubicle
- 9 Provide power and a shelter over the bandstand and replace barrier to cater for events and performances
- 10 Remove chicanes from the EDRT and replace with removable bollard to align with regional trail standards
- 11 Monitor drainage concerns on the Eastern Dandenong Ranges Trail between Princess Avenue and the road to the carpark and consider upgrading trail surface with an exposed aggregate concrete to match the existing gravel surface
- 12 Consider opportunities for activation and increased visitation to the Nobelius Heritage Park such as markets, performances and events
- 13 Upgrade fence between rail embankment and main entrance
- 14 New interpretive signage and maintain specimen display plates for park information, historical and educational purposes
- 15 Replace wheel stops with post and rail fence
- 16 Relocate wisteria away from the road, with a new arbour for support
- 17 Undertake regular maintenance on the existing water sensitive urban design (WSUD) swale to ensure it retains drainage functionality
- 18 New connecting path, with steps as required from the EDRT to the Emerald and District Museum

LEGEND

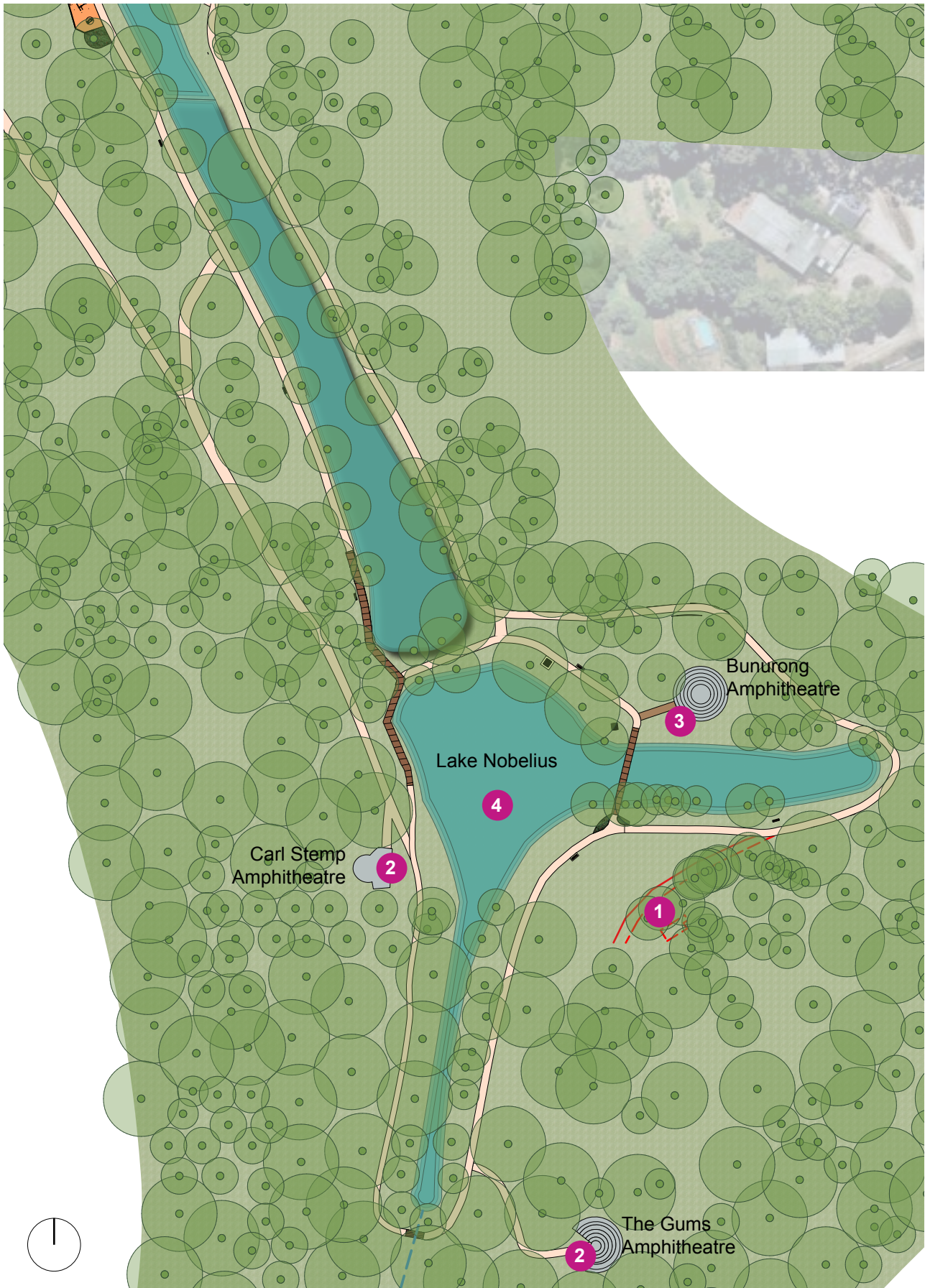
	Existing tree (indicative)		Proposed gravel path
	Proposed vehicular grade asphalt		Existing park furniture to be retained
	Existing vehicle access to be retained		Proposed picnic settings
	Proposed path		Proposed BBQ
	Existing path to be retained		Existing building
	Existing shared use path		Proposed shelter

6.5 Cafe Zone



- 1 Remove the Emerald Park Park cafe building and repurpose to a picnic and barbecue area with a large shelter
- 2 Remove existing toilet facilities, associated infrastructure, landscape embankment, fencing and access path. Return the site to open lawn
- 3 Create an exercise hub close to the paths to provide all abilities. Ensure it includes equipment suitable for all abilities
- 4 New garden area to prevent erosion where the slope meets the path
- 5 Retain Bandstand for small events and performances

6.6 Lake Nobelius Zone



- 1 Remove existing toilet facilities and associated infrastructure
- 2 Undertake repair and renewal works at the Gums and the Carl Stemp amphitheatres including the upgrade of seating facilities (including seating areas for all abilities where possible)
- 3 Undertake repair and renewal works at the Bunurong amphitheatre including the upgrade of existing seating facilities (including seating areas for all abilities), an accessible path from the lower path and the addition of an arbour (refer to images below).
- 4 Undertake ongoing desilting work at Lake Nobelius as required to maintain lake health



Bunurong Amphitheatre



Example of access ramp cut through amphitheatre to improve access.



Arbour example

6.7 Precedent images



Sound shell - 6.2, #2



Gateway entry feature - 6.2, #23



Permeable amphitheatre seating - 6.6, #2 & #3



Blended ramp and stairs - 6.2, #2



Post and mesh fence - 6.4, #13



DDA compliant BBQs - 6.1, #5



DDA compliant park furniture - 6.1, #5

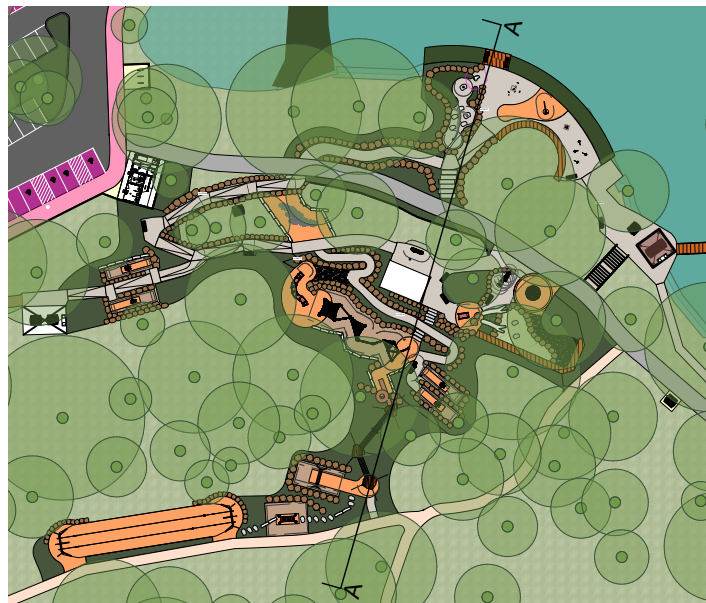


Automatic, DDA compliant toilet unit with unisex, ambulant and disabled cubicles. Consider Colorbond cladding or similar that blends into the environment

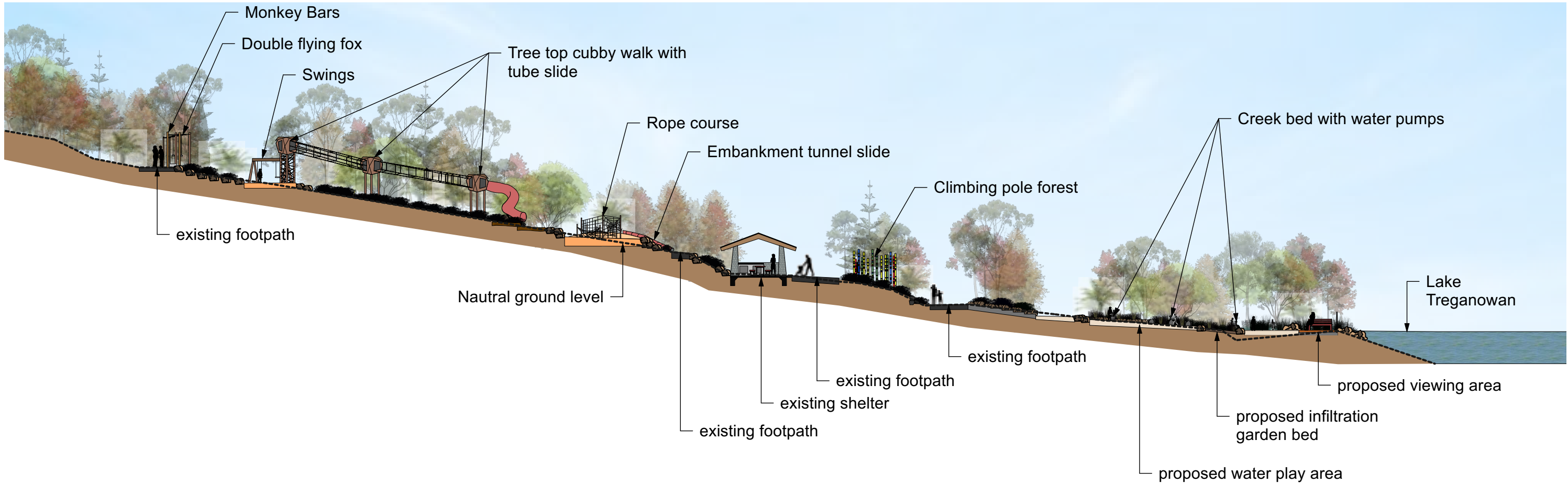
7. Playspace Concept Plan



- 1 Creek bed with water pumps in rocks
- 2 Seating and viewing area
- 3 Investigate opportunities to convert wading pool into infiltration garden bed to catch waterplay runoff. Garden bed fenced as a barrier between the playground and the lake
- 4 Water sprays
- 5 Water pump and seesaw water pump
- 6 Water spray masts
- 7 New shelter and picnic area
- 8 Steps
- 9 Toilet block with Changing Places facility (subject to external funding) , disabled cubicle and 3x ambulant cubicles.
- 10 Climbing pole forest
- 11 Swings
- 12 Retain rubble stone shelter
- 13 Embankment tube slide
- 14 Rope course
- 15 Junior embankment slide
- 16 Accessible carousel
- 17 Sandpit with retaining seating edge
- 18 Musical equipment
- 19 Tree top cubby walk with tube slide
- 20 Monkey bars and balance trail
- 21 Double flying fox
- 22 Consider opportunities to engage local artists in the development of the playground such as through sculpture, visual artwork signage
- 23 Ensure all rocks and logs can be used as informal seating to create quiet spaces for all users
- 24 Provide paths and accessible surfaces to ensure all play areas can be accessed by all



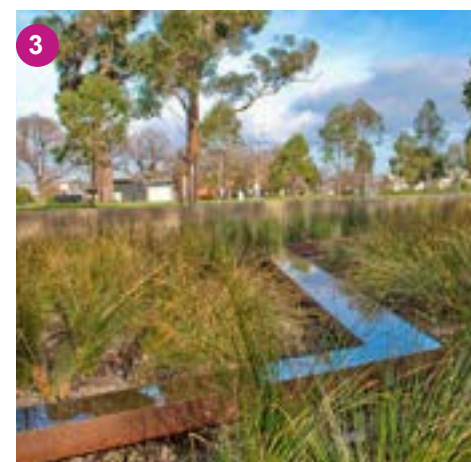
Context Plan



Section A-A



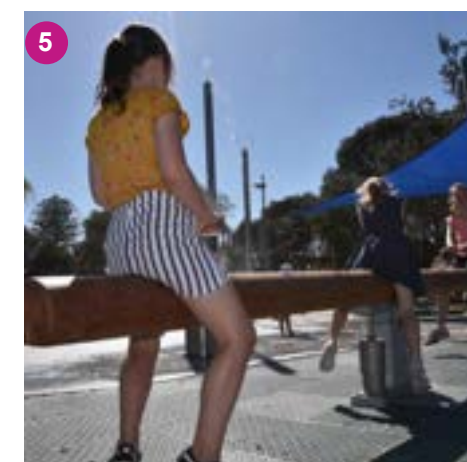
1
Creek bed with water pumps



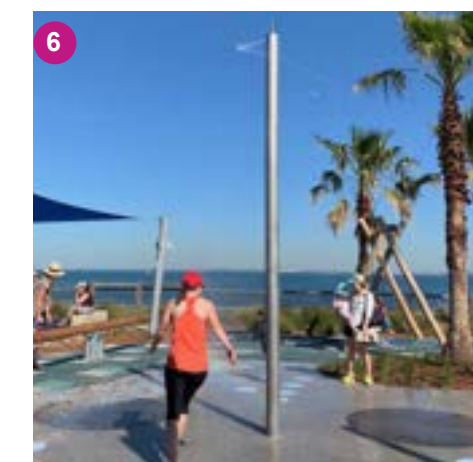
3
Infiltration garden bed



4
Water sprays



5
Seesaw to activate water pumps



6
Water spray masts



10
Climbing pole forest



11
Swings (with junior and senior seats)



13
Embankment tunnel slide



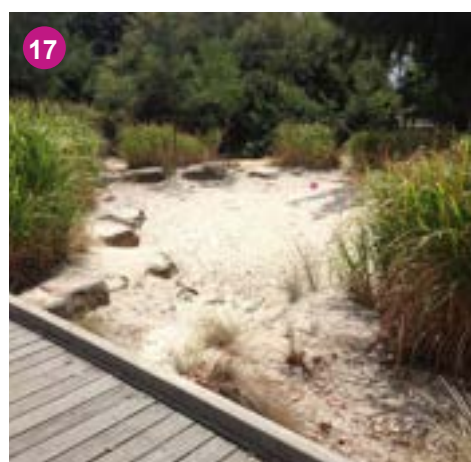
14
Rope course



15
Junior embankment slide



16
Accessible carousel



17
Sand pit



18
Musical instruments



19
Tree top cubby walk with tube slide



21
Double flying fox